



VandalProof IP Dome Camera

Model: 2252-23/2252-30/2252-73

GOLBONG®

en Operation and Installation Manual

Welcome	4
Product Overview	5
Hardware Installation	5
Using CMS5 for PC or Mac	7
<i>System Requirements</i>	7
<i>Installing Software</i>	7
<i>Network connection and settings.....</i>	7
Connect to IP Camera	7
Optional 1: What should you do when IP address get conflict?	9
Optional 2: How to add the cameras to CMS5 outside of LAN	9
Optional 3: How to Configure the network setting of the camera manually.....	10
<i>Live Video</i>	11
Watch the live	11
Digital ZOOM	12
Activate the audio (Camera supports audio and connect to the audio pick-up only)	13
PTZ control (camera with motorized zoom lens only)	14
<i>Change the Password of the Camera</i>	15
Set a new password for “admin”	15
Optional1: How to create an account for operator?	16
<i>Recording live to your computer</i>	17
<i>Playback the video on your computer</i>	18
<i>Recording live to TF memory card (cameras with microSD only)</i>	20
Format TF memory card	20
Turn on the TF memory card recording:	21
Enable Motion recording	22
Enable network dis-connection recording.....	23
Optional: Enable External Alarm Detection Recording.....	24
<i>Playback the video from TF memory card (cameras with microSD only).....</i>	25
<i>Download the video to your computer hard drive (cameras with microSD only).....</i>	27
<i>Upload snapshot or video to FTP server</i>	28
Setup the FTP server:.....	28
Enable the on-board storage recording	29
Enable on Motion detection.	29
Optional: Enable FTP upload with external alarm input detection.....	30
<i>Email notification.....</i>	31
Set email account	31
Enable Snapshot.....	32
Configure alarm event for email notification.	33
<i>Other options</i>	36
Video View	36
Video Tour	37
Local Alarm	38
Check the log	39
Setting Camera Parameters	40
Installing a new Firmware	42
Connecting to an NVR/DVR	43
Connect your cameras to recorder	43

Get the live.....	44
Set Camera Image Quality	46
Optional: How to activate the audio in your NVR	47
Optional: Change the IP address of the camera from NVR.	48
Optional: Switch PAL/NTSC at front-end device video format	49
Connecting to an Onvif Server	49
Discover the onvif port.	49
Connect to 3rd party VMS software (use Geovision as example)	50
Smartphone or Tablet Apps.....	54
<i>Download app.....</i>	54
<i>Registration.....</i>	54
<i>Connecting to your ip camera on an smart phone or tablet.</i>	55
<i>Live view interface</i>	57
<i>Optional1: How to change the video quality to adapt to low bandwidth network.</i>	59
<i>Set a Password for the Camera.....</i>	60
<i>Saving live stream to your smart phone</i>	62
<i>View snapshot at local files.....</i>	63
<i>Playback footage on TF memory card (cameras with microSD only)</i>	64
<i>Optional: How to enable the motion recording from your smart phone.....</i>	66
<i>Download footage from TF memory card (Cameras with microSD only).....</i>	67
<i>Enable Push Notification.....</i>	68
<i>Optional Receive the IP setting from your local network (DHCP)</i>	72
Web Browser connection.....	73
<i>Checking your web browser security level</i>	73
<i>Access the camera over internet</i>	76

Welcome

Thank you for purchasing GOLBONG IP network camera!

This user manual is designed to be a reference tool for the installation and operation of your IP camera. Here you can find information about the camera's features and functions, as well as information to aid in troubleshooting.

Many of the setup and installation sections below have corresponding videos on YouTube

To access the setup videos, please go to <https://www.youtube.com/golbongtoday>



For access to the quick start guide and other support information, go to <http://www.golbong.com/support.asp>

To contact GOLBONG support, please do one of the following:

- a. Visit <http://www.golbong.com/contact-us.asp> and use the email form
- b. or Email GOLBONG Customer Support: support@golbong.com

Important Security Warning



In order to keep your GOLBONG camera secure and prevent unauthorized access, please make sure to follow the steps below: Never use the default password for your camera. Always ensure that your

password is at least 8-10 characters long and contains a combination of lowercase characters, uppercase characters as well as numbers.

Product Overview



Hardware Installation

Connect to pre-make RJ45 cable

Pass the RJ45 cable thru the camera based, rubber band, and the fasted plug. The rubber band has breach for cable..



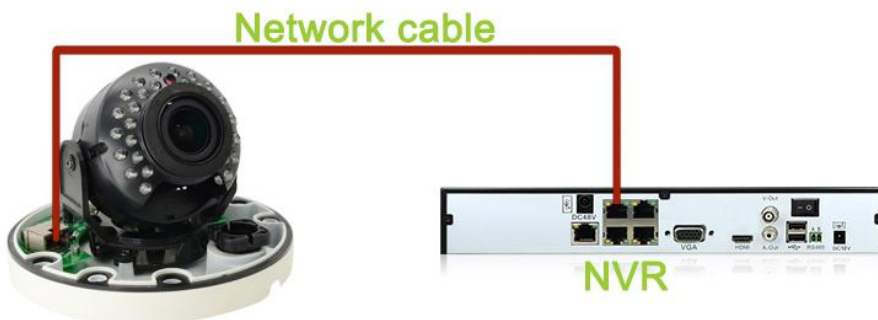
Fast the plug with wrench

Fast the plug until it reaches the base.



Direct Connection to NVR

Connect cameras to the PoE Ports on the rear panel of the NVR using Cat5e or higher grade Ethernet cable. The cameras will appear on the NVR without any additional configuration when the system starts up.



Connect Cameras to Local Network

Option 1: Connect Cameras to Local Network, You can also connect your IP cameras to your local network for flexible installations.



Using CMS5 for PC or Mac

System Requirements

CPU	Core 2 Duo 3.0GHz
Operating System	Windows™ 8/7/Vista
Memory	2GB
Video	512 MB of video memory and above
Network (LAN)	10/100 Base-T Network
Network (WAN)	1 Mbps upstream High-speed Internet service is required to remotely connect to your system.

Installing Software

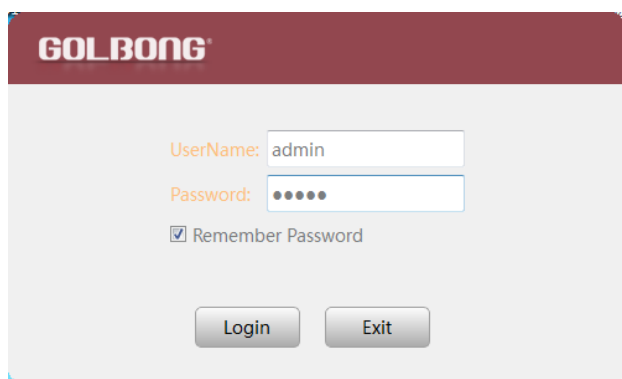
Download the latest version of the windows PC software using the link below.

<https://goo.gl/NHg7C3>

Network connection and settings

Connect to IP Camera

1. Click icon CMS5, a dialog will appear. Key in the username and password to enter Main console.



GOLBONG

UserName: admin

Password: ●●●●●

Remember Password

Login Exit

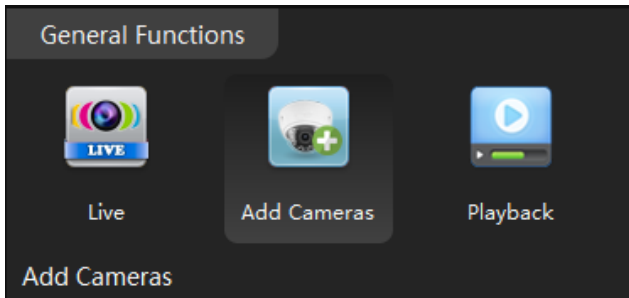
NOTE: The default username and password of the software is “admin”

If you want to revise the login username and password of the software, go to the “Main” click "User Manager"

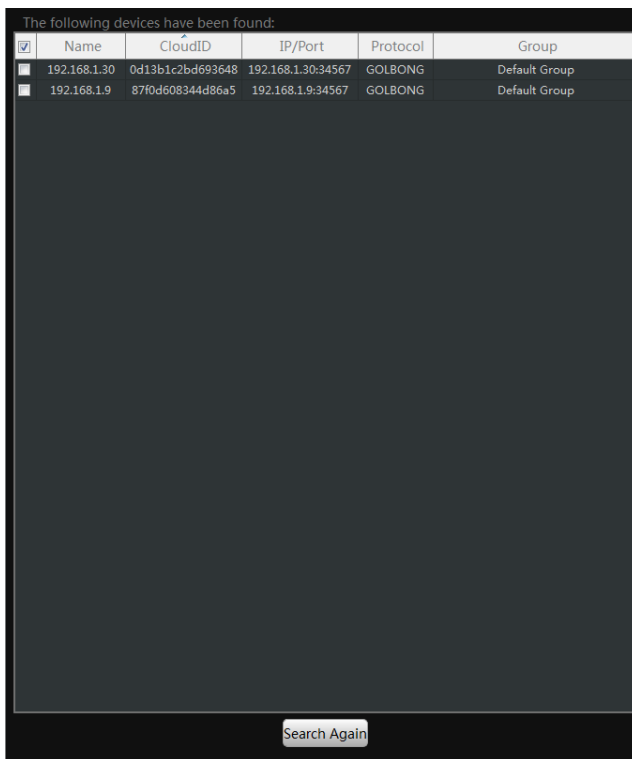


, change the new password.

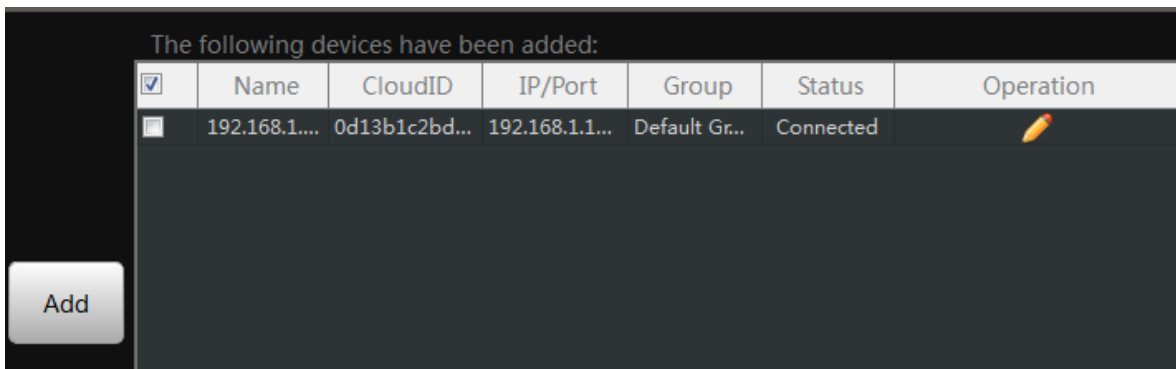
2. In the "Main" , Click “Add Cameras” to enter a new screen.




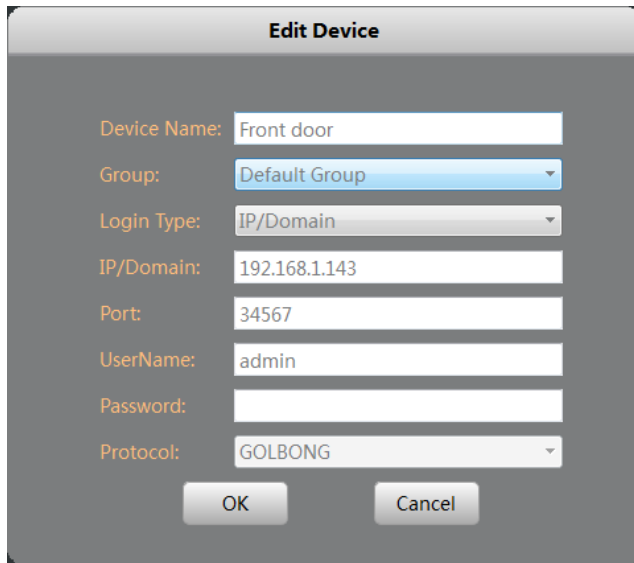
3. Click “IPV4 search” button. The available devices will display on the left screen.



4. Mark the checkbox in front of the IP address, click “Add ” button. The IP camera will move to right.



- Click the pen icon  under “operation”, a new dialog pop up, name the camera, Click “OK” to save.




NOTE: NO password required for camera/NVR in default. You can jump to page-11 to change camera’s password.

NOTE: If you want to access the camera over internet, choose cloudID in “Login Type”

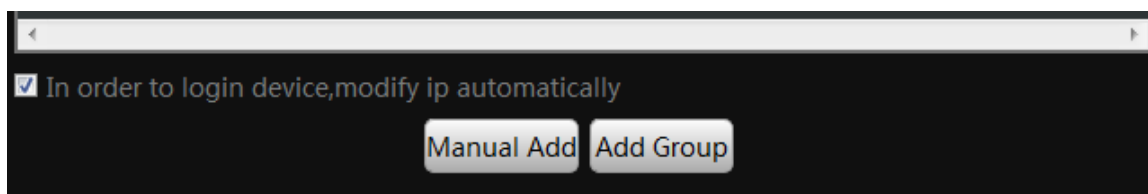
- Once the software has connected the camera successfully, the “Status” will change to “connected”

The following devices have been added:

<input checked="" type="checkbox"/>	Name	CloudID	IP/Port	Group	Status	Operation
<input type="checkbox"/>	192.168.1....	0d13b1c2bd...	192.168.1.1...	Default Gr...	Connected	

Optional 1: What should you do when IP address get conflict?

- Mark the checkbox “In order to login device, modify IP automatically” at the lower right corner.



NOTE: once you mark the checkbox, the software will change the IP camera automatically to avoid the conflicts.

- Return back to step 3. Click “IPV4 search” again. Following step 4 and step 5 until you add all the camera successfully.

Optional 2: How to add the cameras to CMS5 outside of LAN.

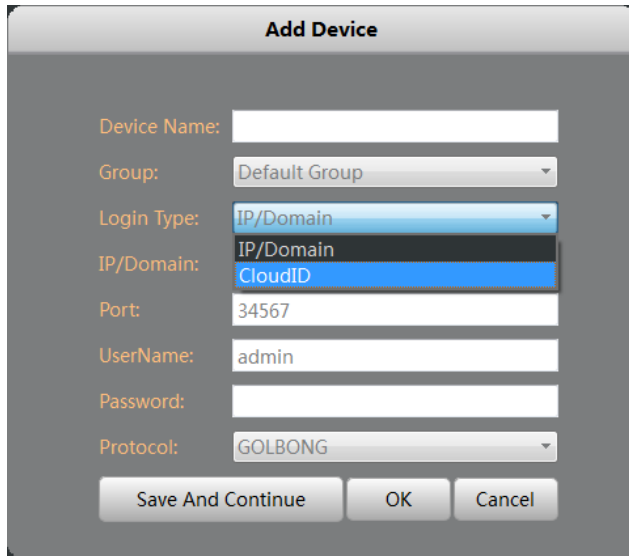
- Click “Manual Add” button at the lower right corner. A new dialog appear.
- Name the camera, Choose the login type.

NOTE: if you didn't configure the port forwarding in your router, you properly need to choose the cloudID in login type.

3. Key in Static IP or cloudID

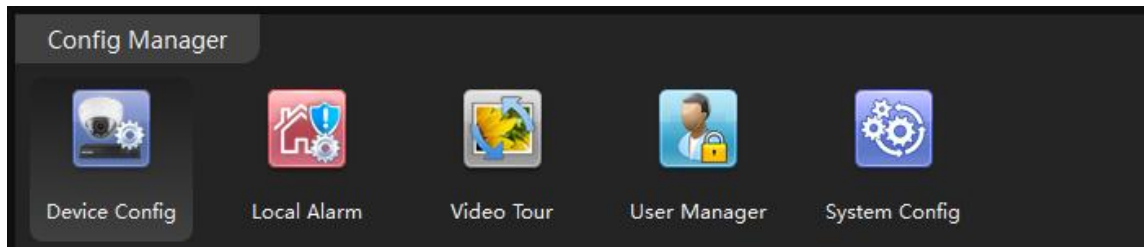
NOTE: You can mark down the cloudID when you connect the camera in the LAN

4. Key in password, and click "OK" to save.



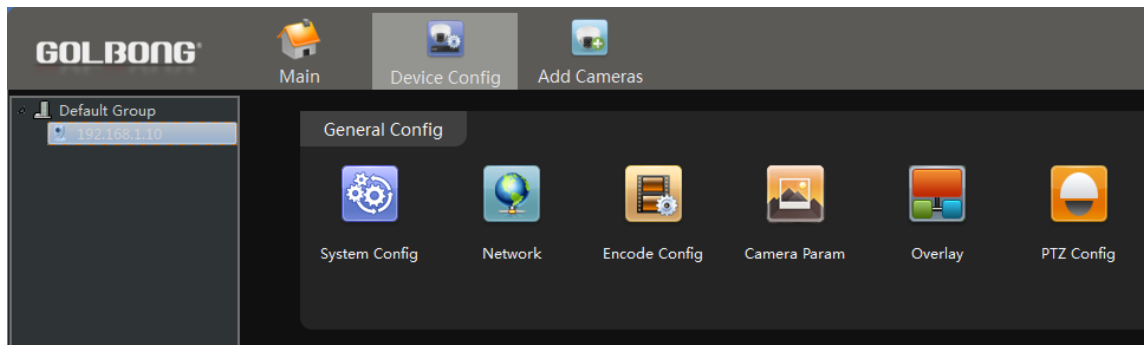
Optional 3: How to Configure the network setting of the camera manually.

1. In the "Main" , Click "Device Config", a new screen appear.

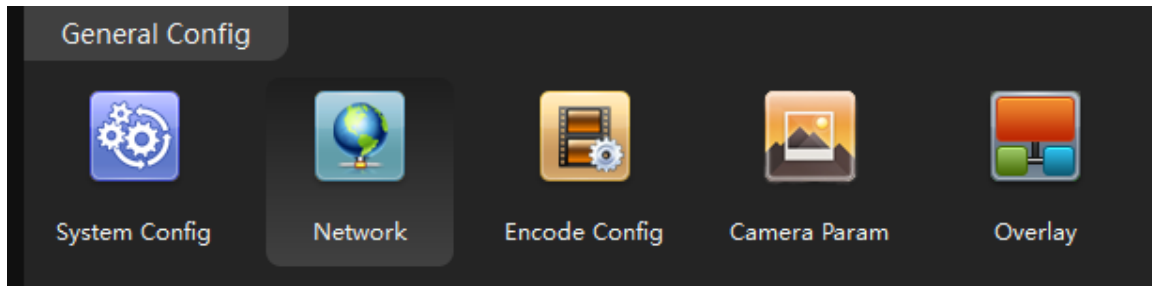


2. Select the camera from the list in the top left. All the icon will be activated with color

NOTE: If the icon remain black/white, check the connection status of your camera.



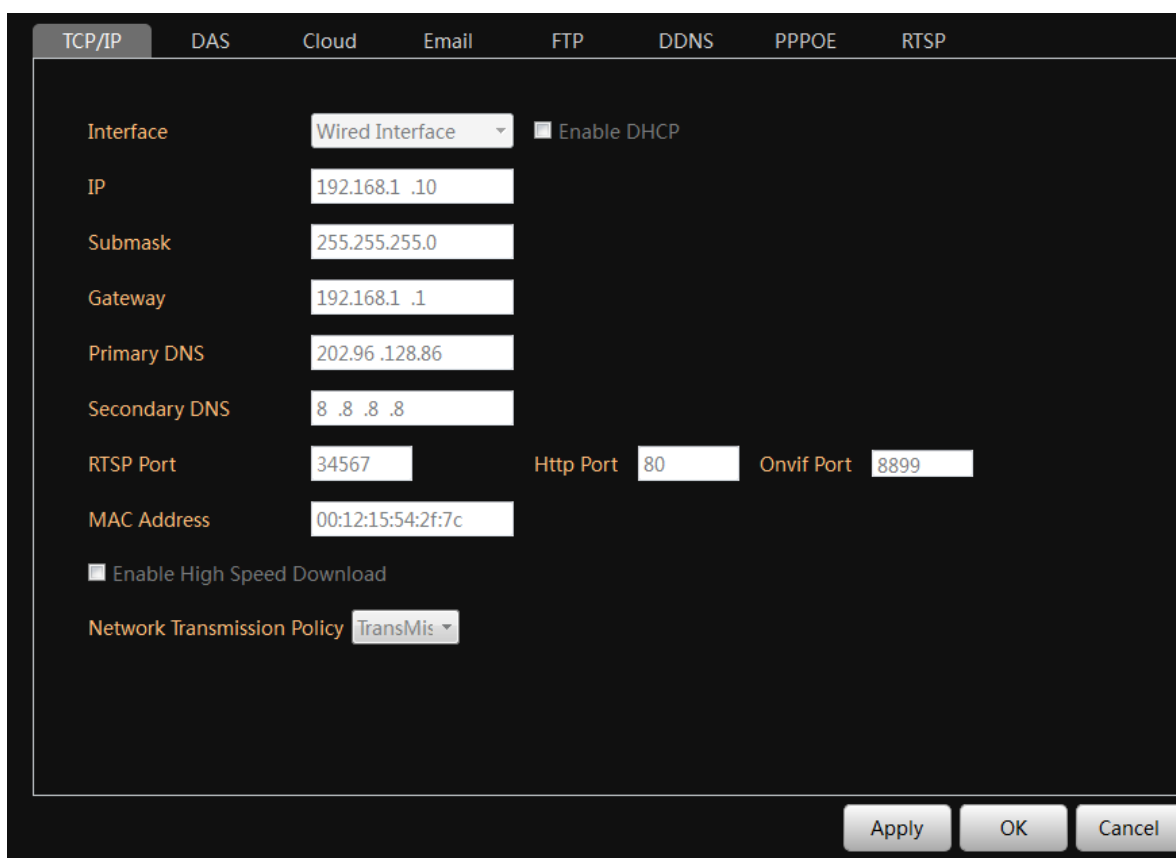
3. Click Network icon, a new screen will appear with "TCP/IP" setting.



4. Modify the IP setting. Click "OK" to save

Important: The DNS should be configured correctly, otherwise the cloud connection and email notification may not be working.

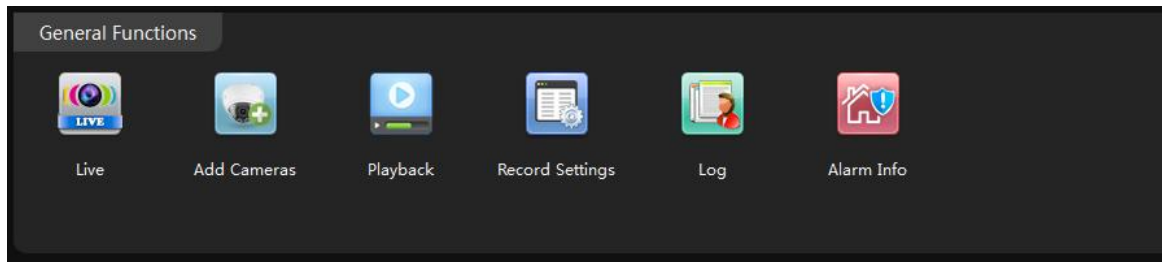
NOTE: If you don't know you network setting, mark "enable DHCP" to receive the IP setting from your local network. Click OK, the IP camera has to reboot to receive the correct IP setting from your local network.



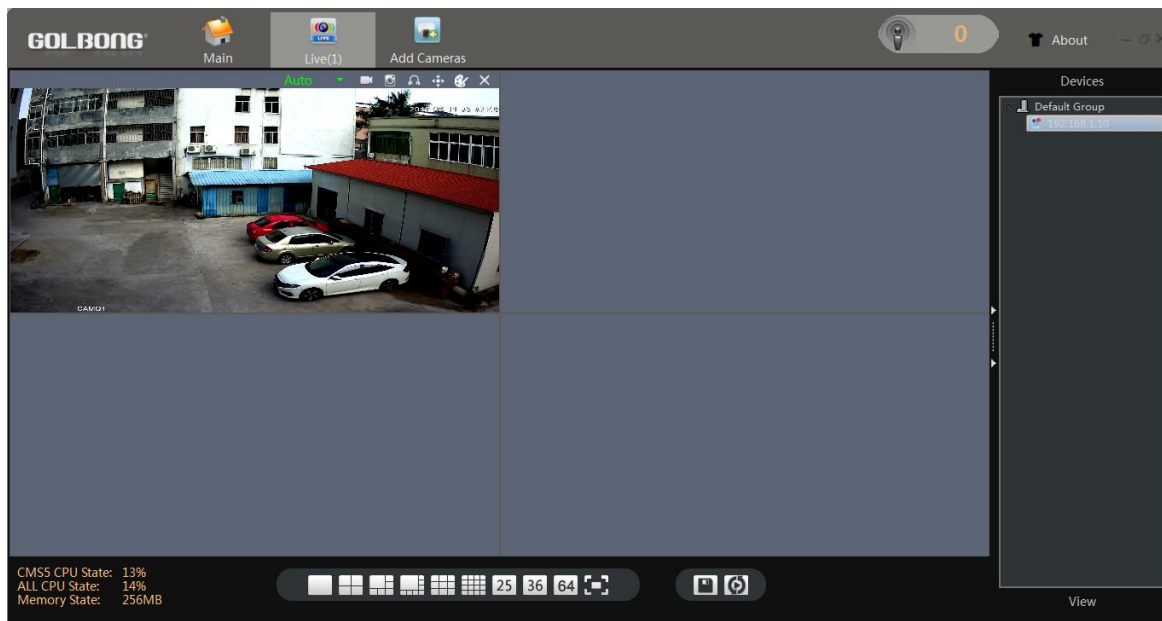
Live Video

Watch the live

1. In the "Main" , Click "Live" icon to enter live view interface.



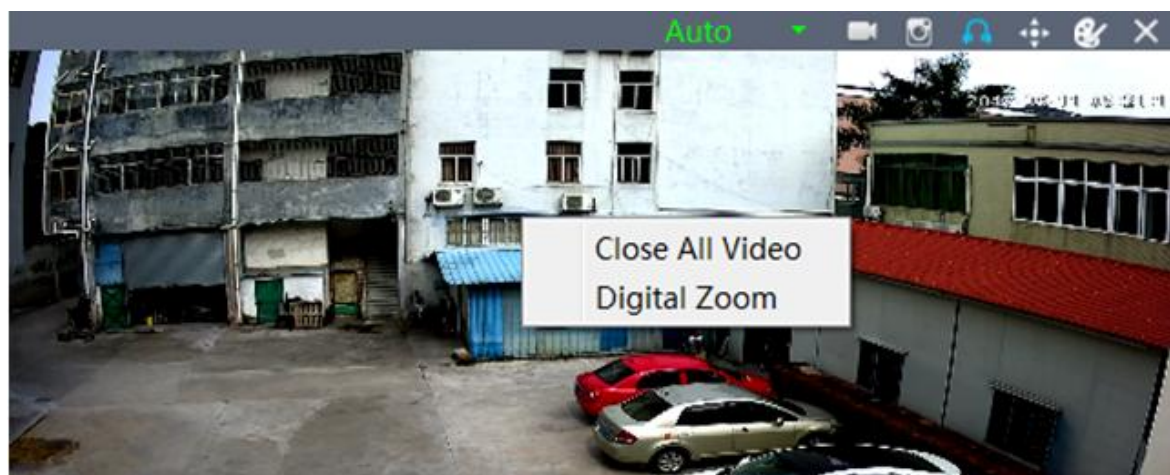
2. Double click the camera in the devices list. CMS5 will start receiving the live.



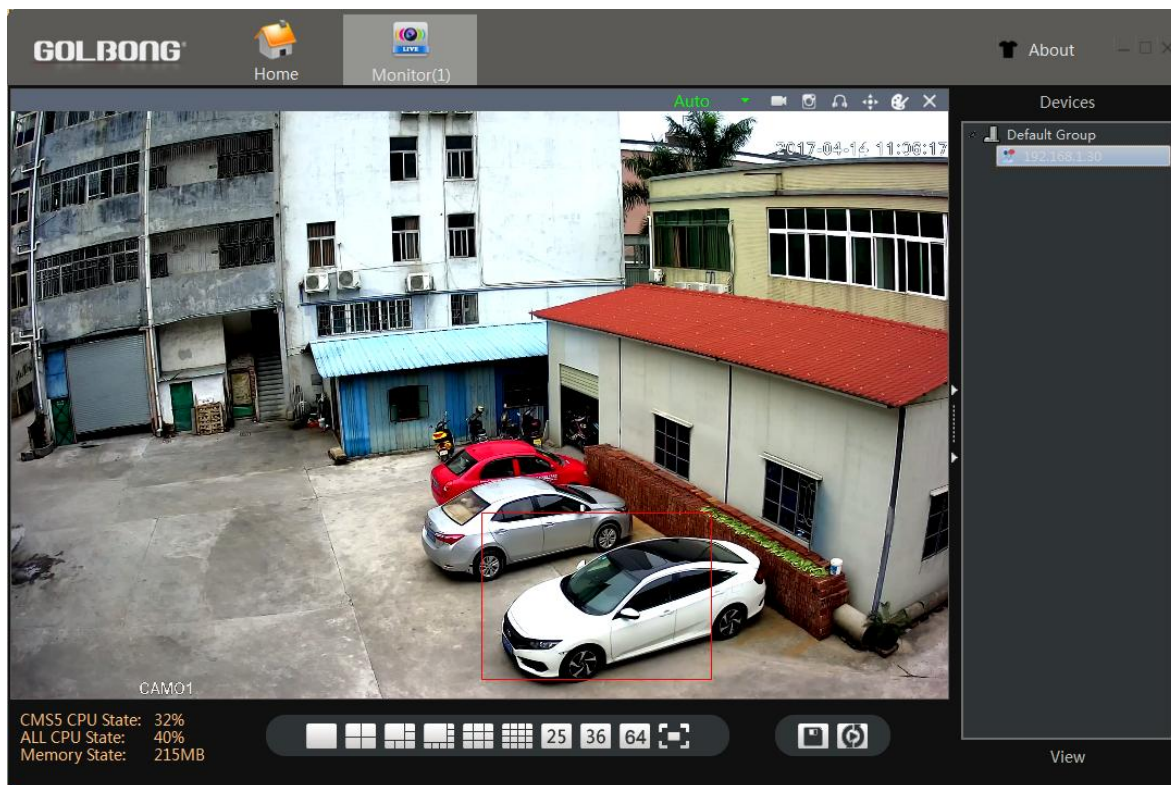
NOTE: Double click the name again can close the video.

Digital ZOOM

1. Right the video you want to operate digital zoom on the screen, select “Digital Zoom”



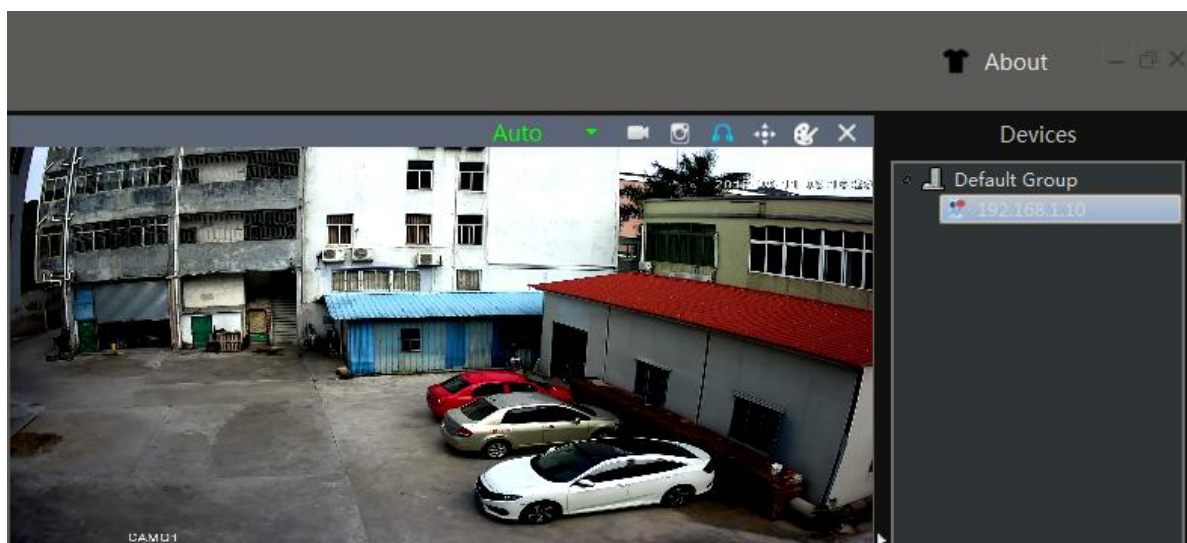
2. Hold the left-button on mouse to selected area in red square. As shown below:



3. Release the mouse to zoom in.
4. Right click mouse again, uncheck “digital zoom” to close the zoom operation.




Activate the audio (Camera supports audio and connect to the audio pick-up only)

1. In the live, Click headset icon“🎧” on the top right corner to hear the voice from the IP camera.



Important: You need to enable the audio in the “encode” in order to record the footage with audio.

PTZ control (camera with motorized zoom lens only)

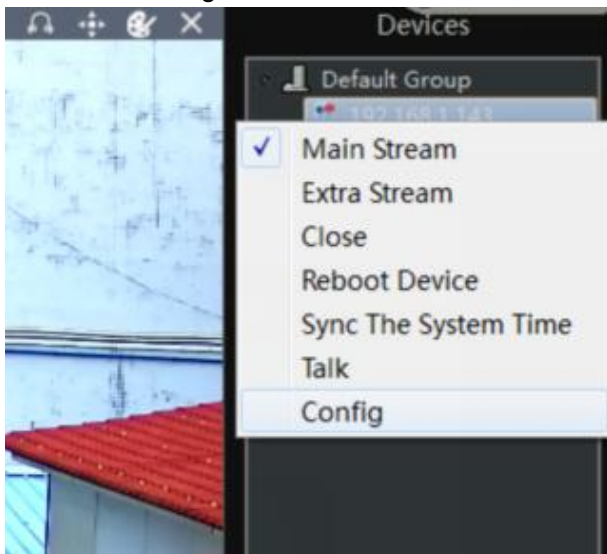
1. In the live, click the joystick icon  on the top right window, a joystick panel appear
2. Click icon next to “Zoom” to zoom in  or zoom out . The camera will take a while to get the focus.
3. If the camera doesn't stay on the ideal focus position. Press the “Focus” button, then try again the “Zoom” until it finds the ideal focus.



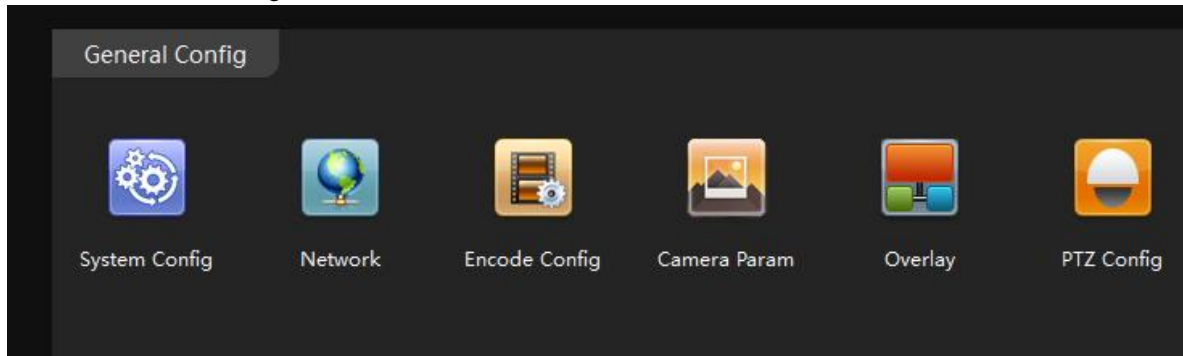
Lock the motorized zoom

If you don't want the operator to change the lens after you get the right position of the lens. You can manual lock the motorized zoom

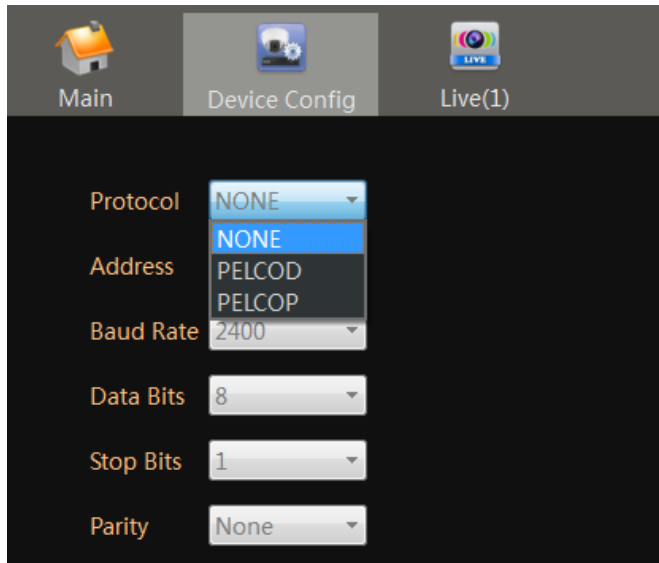
1. In the live, right click the device name, and select “Config” to enter “Device Config”



2. Select "PTZ config" to enter new screen.




3. Select "NONE" to replace PELCOD in protocol, click "OK" to Save

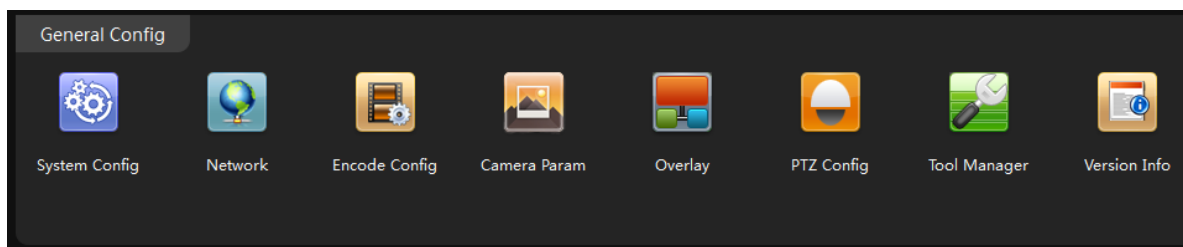


NOTE: If you want to enable motorized zoom, choose PELCOD.

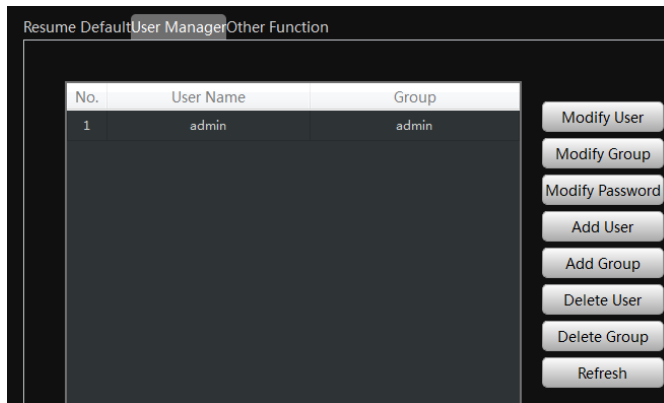
Change the Password of the Camera

Set a new password for "admin"

1. In the "Main" , click "Device Config". Enter "Tool Manager" on the right screen, A new screen appear.



2. In the top left menu, select the camera for which you want to change the password.
3. Click "User Manager" on the top screen.



3. Click "Modify Password". A new screen pop up. Enter the old password and your new password. Click "OK" to save.

Note: The default password is blank

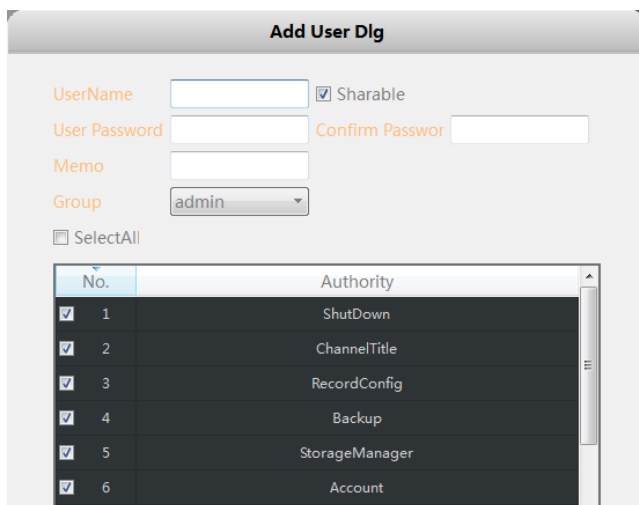
Optional1: How to create an account for operator?

1. Click "Add User", a new screen pop up.
2. Key in the Username, Password.

NOTE: Mark "Sharable" will allow more than one operator use the same account.

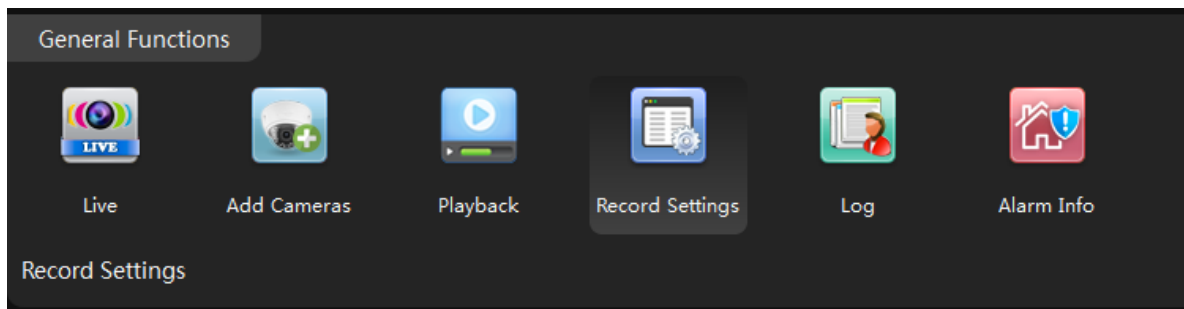
3. Allocate the authority to this account. Click "OK" to save

NOTE: Operator who login with account only can use the permissions what you ticked.



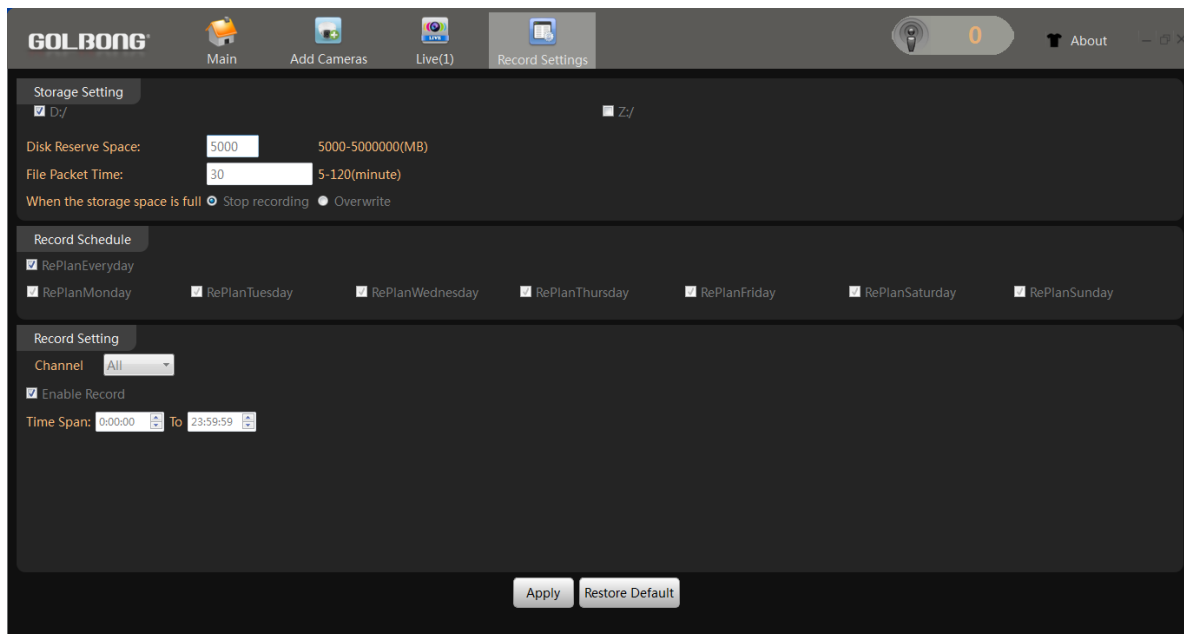
Recording live to your computer

1. In the "Main" , Click "Record Settings" 



2. Mark the check box on the storage setting to select the storage disk from your PC computer.
3. Mark the checkbox to select "Record Schedule"
4. Mark the checkbox in front of "Enable Record", Click "Apply" button to Save.


NOTE: this is the switch button to turn on/off recording.



5. Return to the live interface, double click camera on the list, CMS5 will start recording from the live.



NOTE: the CMS5 only will start recording when it is receiving the live. Dis-connect the camera will turn off the recording.

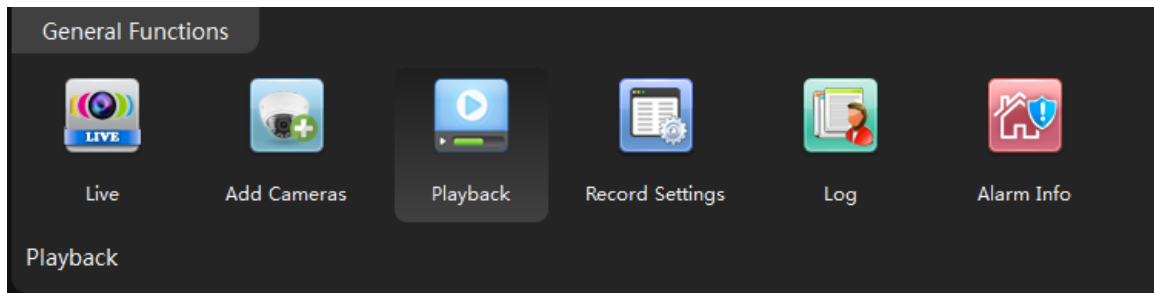
NOTE: The camera icon will turn back/white  to blue  when CMS5 is recording.

6. Click camera icon  on top right windows to turn off the recording.

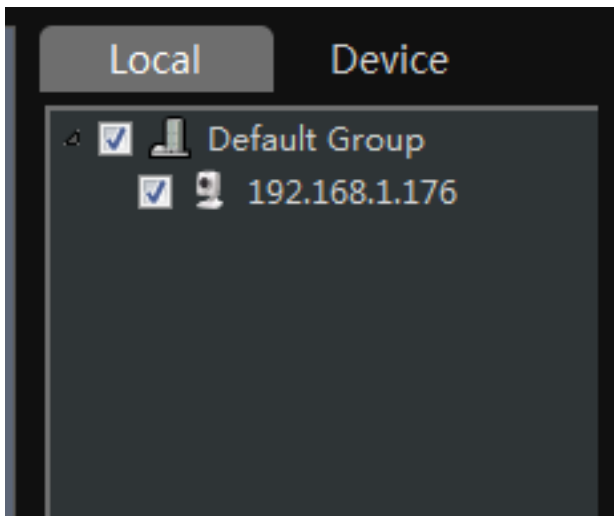


Playback the video on your computer

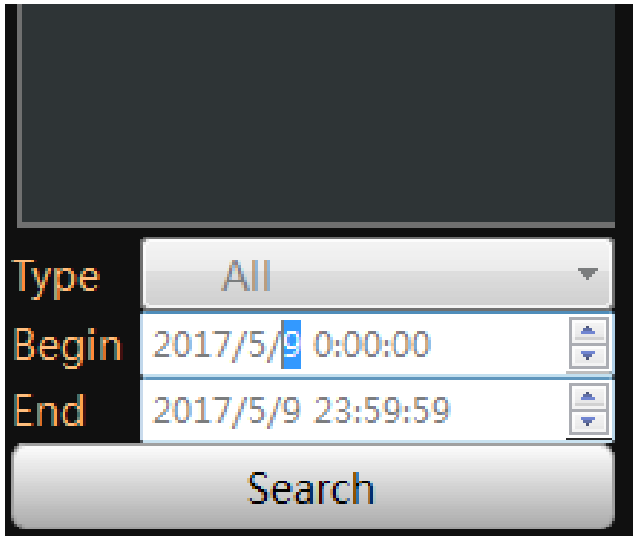
1. In the "Main" , Click "Playback" icon , a new screen appear.



2. Select the channel from the camera list in the upper right corner.

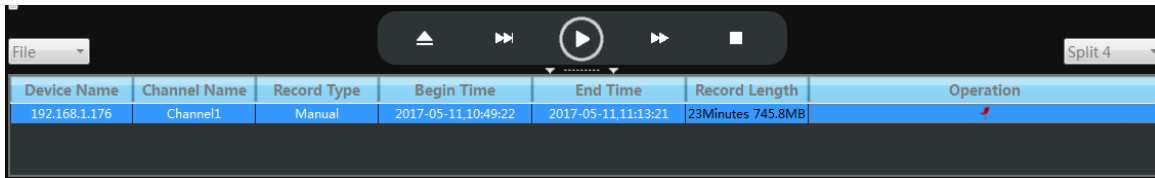



3. Select the time period in the lower right corner.




NOTE: It only can search footage within a single day.

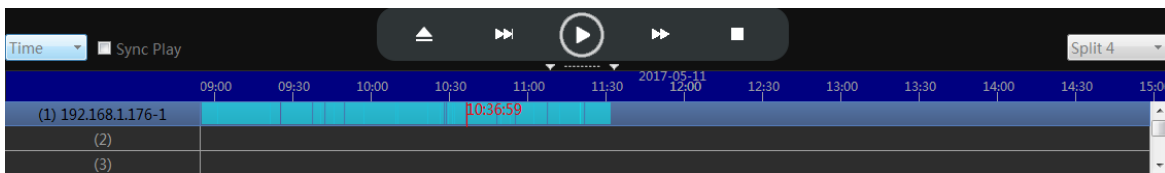
4. Click "Search". The search result will display as below.



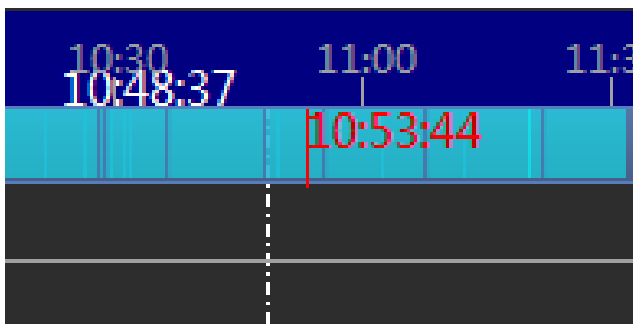
5. Select the footage from the list, click play button , the software will start playing.

NOTE: Click "" can locate the files in the PC computer.

6. Choose the "Time" over "File" at the left corner, the time frame will appear.



7. Move the mouse to the time frame, time will display in white. Click the mouse, the software will start playback the footage from this moment.



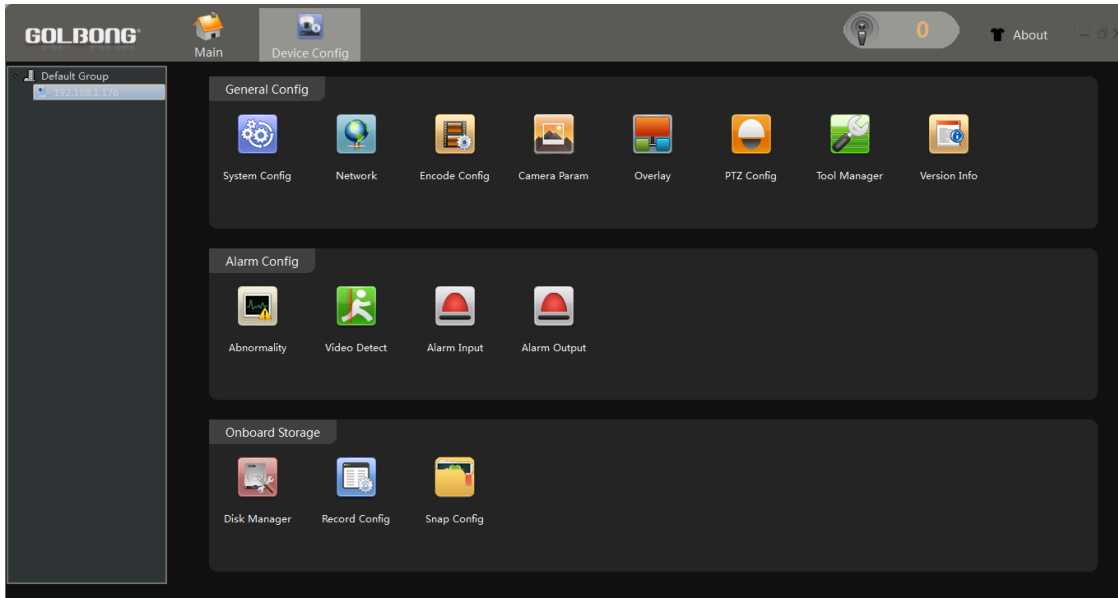
NOTE: the time in red is current playing time stamp.

Note : Mark the checkbox "Sync Play" can playback multi-channel at the same time

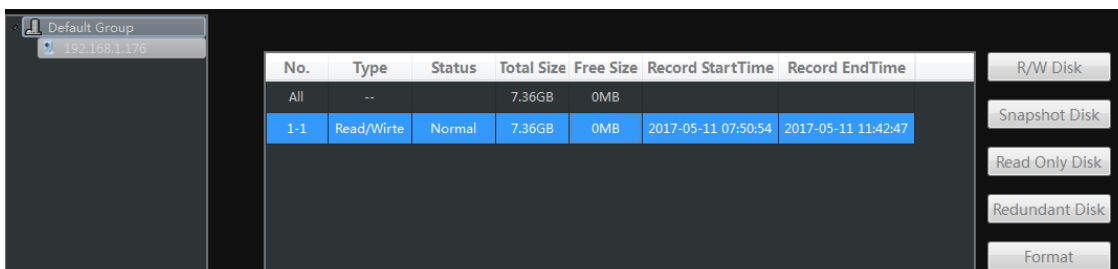
Recording live to TF memory card (cameras with microSD only)

Format TF memory card

1. In the "Main" , Enter "Device Config" and Click "Disk Manager" 



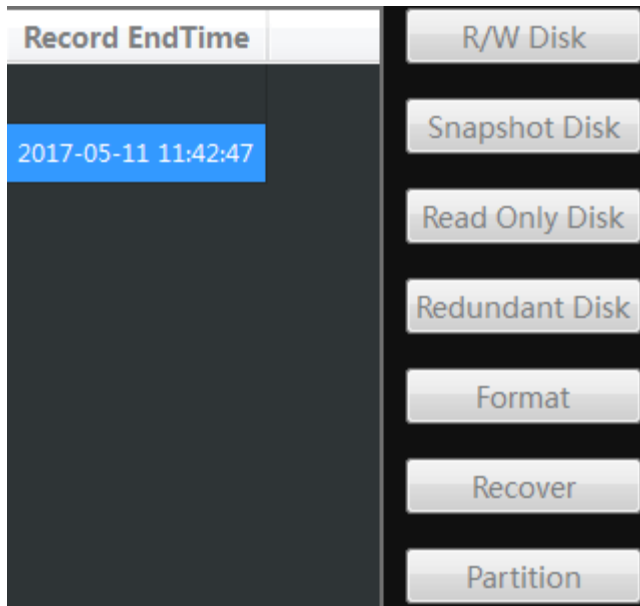
2. Select the memory disk from the list



NOTE: Only the model with TF memory card slot, and the TF memory card is installed will display memory information.

NOTE: Class 8 or higher TF memory card is required.



3. Click "Format" to erase all the data from the TF memory card.

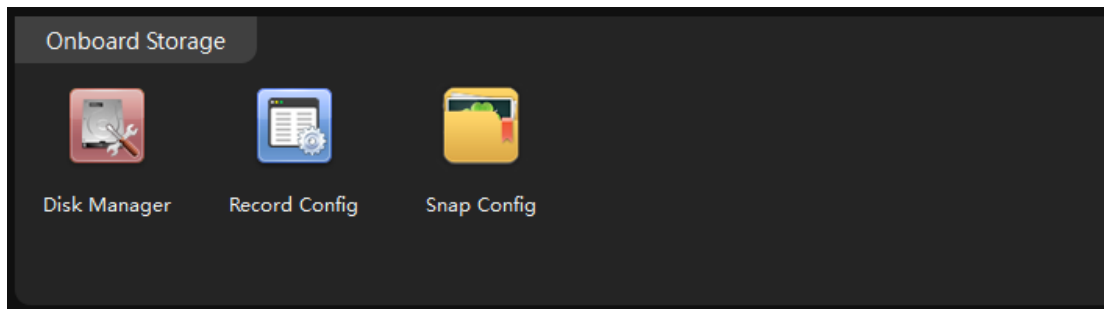


Important: All the data will be erased with format operation.

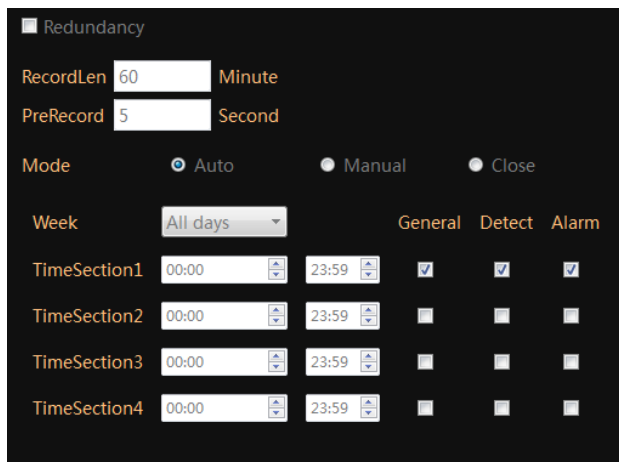
NOTE: The TF memory card can not be viewed by windows PC directly.

Turn on the TF memory card recording:

1. In the "Main" , Click "Device Config" , Enter "Record Config" 




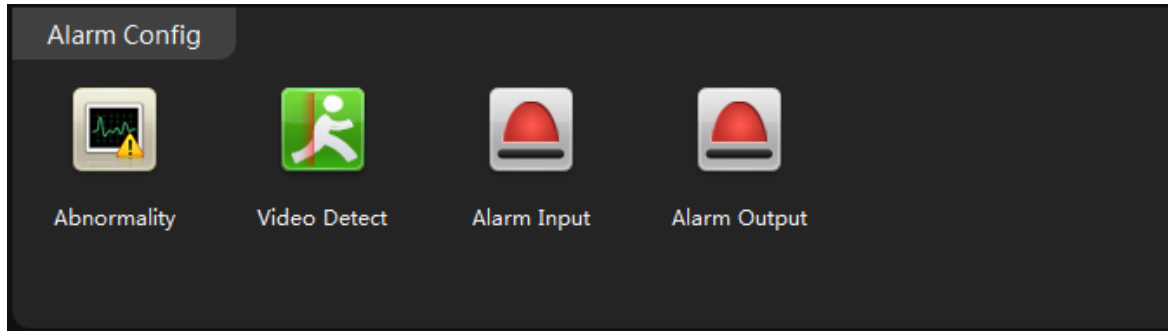
2. Choose "Auto", Click "OK" to save.



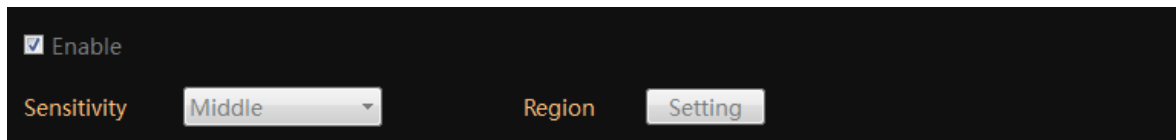
NOTE: Check "General" will keep camera recording continuously. Unchecked the "General", the camera will only record the footage when the motion or alarm input is detected. It can save the hard driver space.

Enable Motion recording

1. In the "Main" , Click "Device Config", enter "Video Detect", a new screen appear.



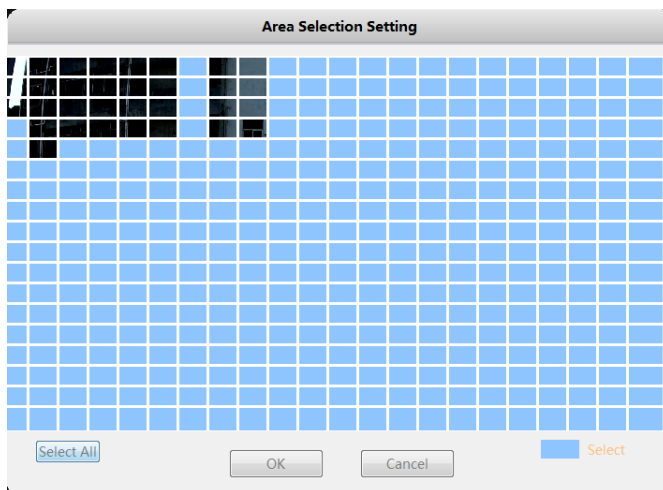
2. Click the enable to turn on the motion detection.



3. Choose sensitivity level from "Sensitivity".

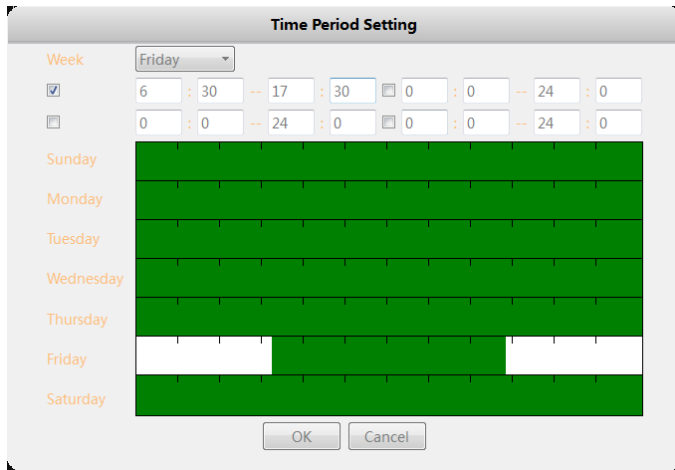
Important: Over sensitivity could cause much more false alarm.

3. Click the "Region", Mark the interested area with blue block.

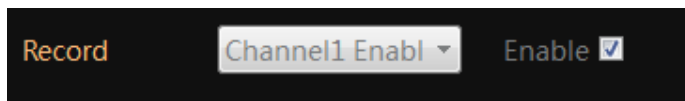


NOTE: The blue block is selected area.

4. Click Period, a new dialog pop up. Customize the schedule to activate the motion detection, click OK to save.





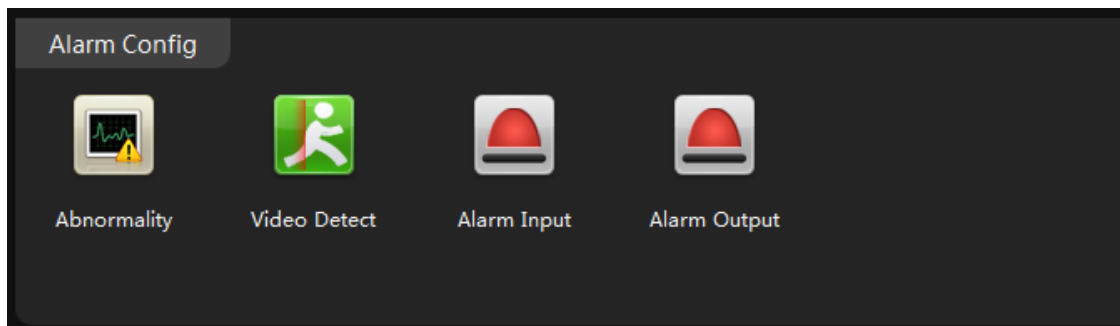
5. Enable the checkbox next to “Record”, click OK to save.



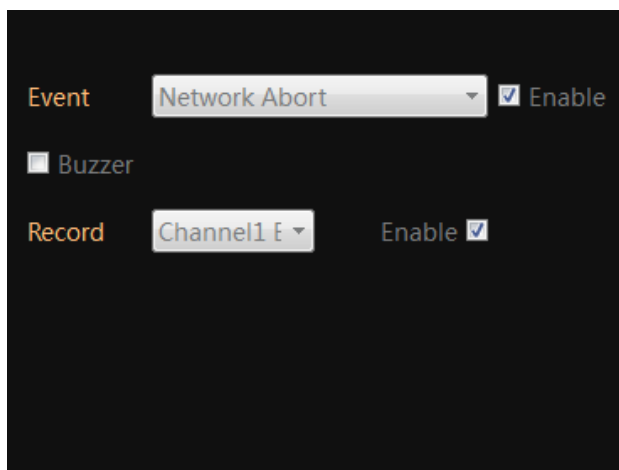
Enable network dis-connection recording.

The IP camera can initial on-board recording when the network is dis-connected.


1. In the "Main" , Enter “Device Config” , Click icon “Abnormality” 

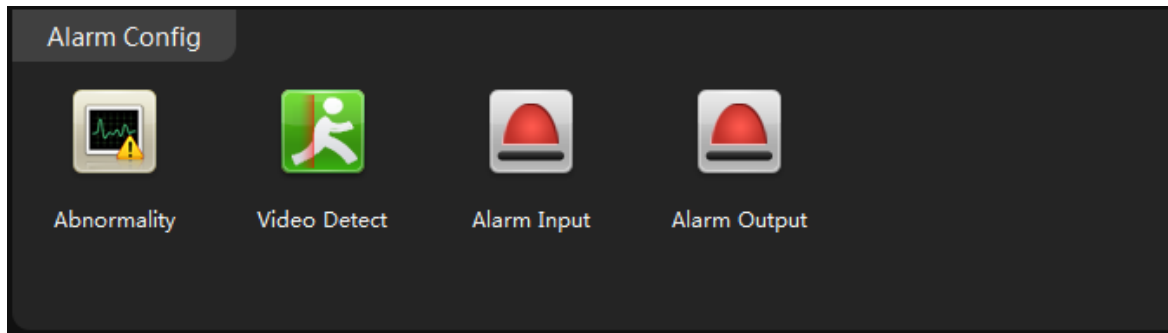


2. Select “Network Abort” from event list, Mark both “Enable”, Click OK to save.

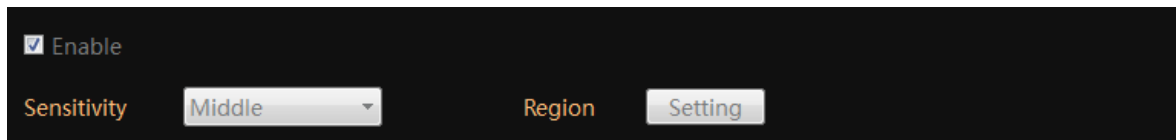


Optional: Enable External Alarm Detection Recording

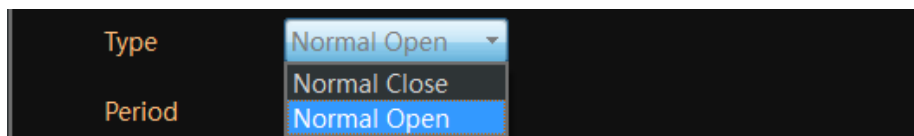
1. In the "Main" , Enter "Device Config", Click icon "Alarm input", a new screen appear.



2. Click the enable to turn on the external alarm detection.

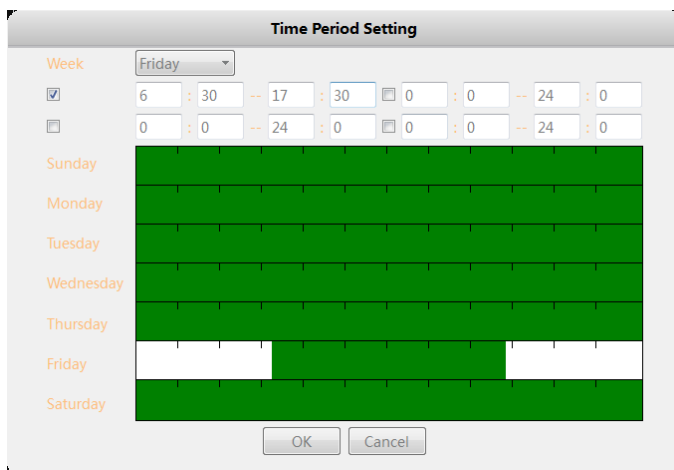


3. Select the alarm type.

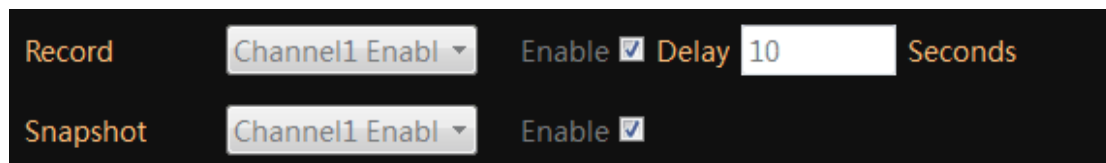


NOTE: Normal Open means the alarm device stays OPEN, it generates digital signal to the camera when the status change to closed.

4. Click Period, a new screen pop up. Customize the schedule to activate the external alarm detection, click OK to save.



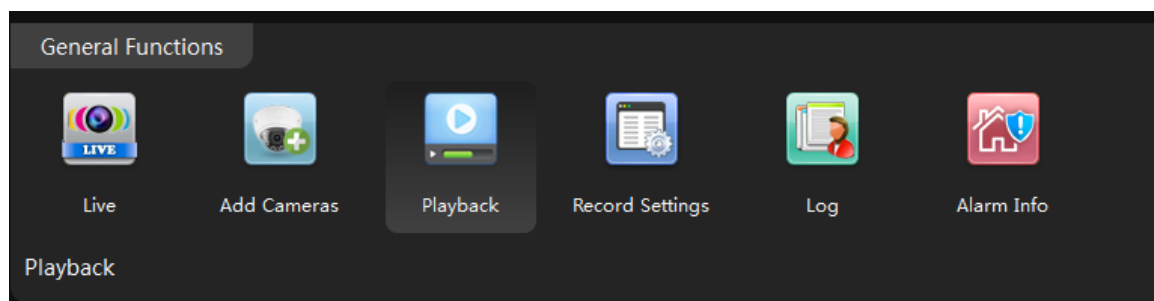
5. Enable the "Record" and "snapshot", click OK to save.



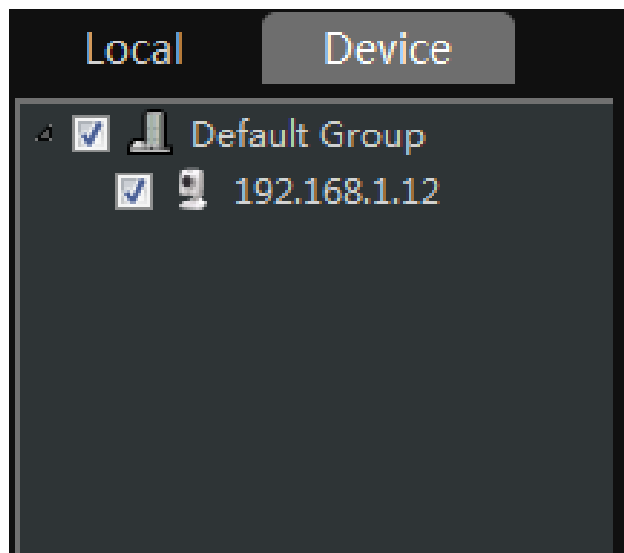
NOTE: The alarm input detection requires external alarm devices such as door contact is connected to the camera properly.

Playback the video from TF memory card (cameras with microSD only)

1. In the "Main" , Click "Playback" .

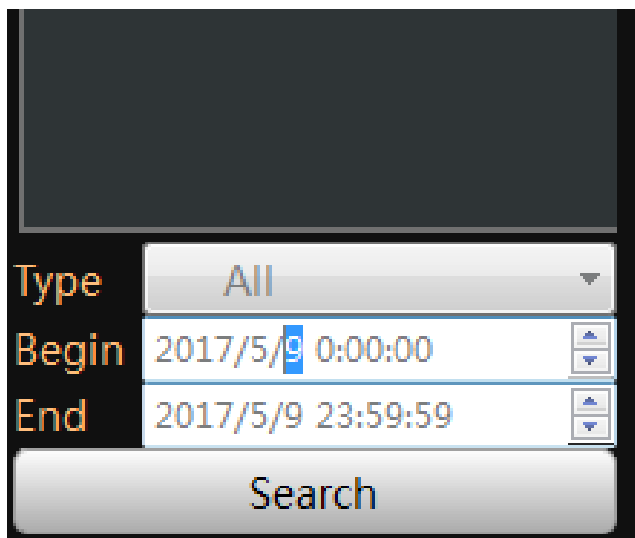


2. Click "Device" to playback the footage on TF memory card.



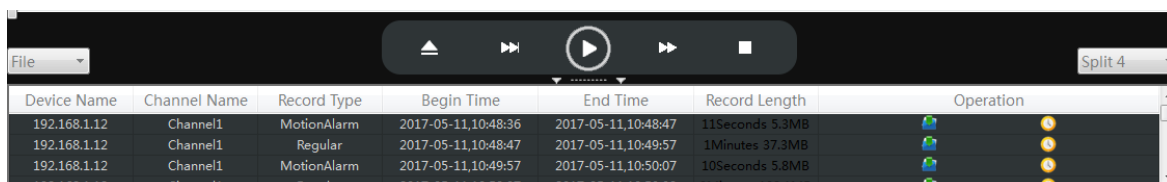
NOTE: If choose "Local", The CMS5 will try to search the footage on the PC computer.


3. Check and select the camera you want to playback.
4. Select the time period in the lower right corner.



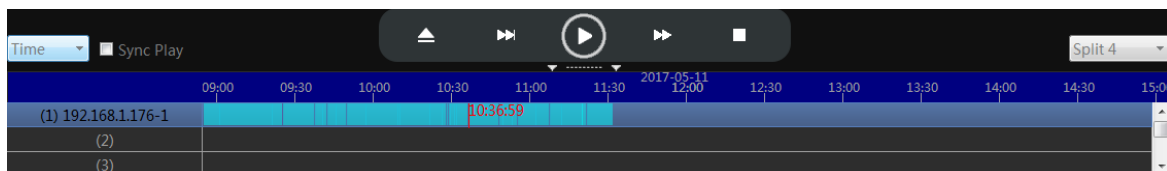
NOTE: It only can search footage within a single day.

4. Click “Search”. The search result will display as below.

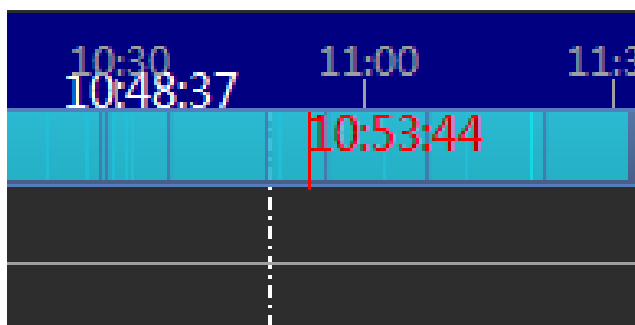


5. Select the footage from the list, click play button , the software will start play.

6. Choose the “Time” over “File” at the left corner, the time frame will appear.




7. Move the mouse to the time frame, time will display in white. Click the mouse, the software will start playback the footage from this moment.







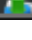




NOTE: the time in red is current playing time stamp.

Download the video to your computer hard drive (cameras with microSD only)

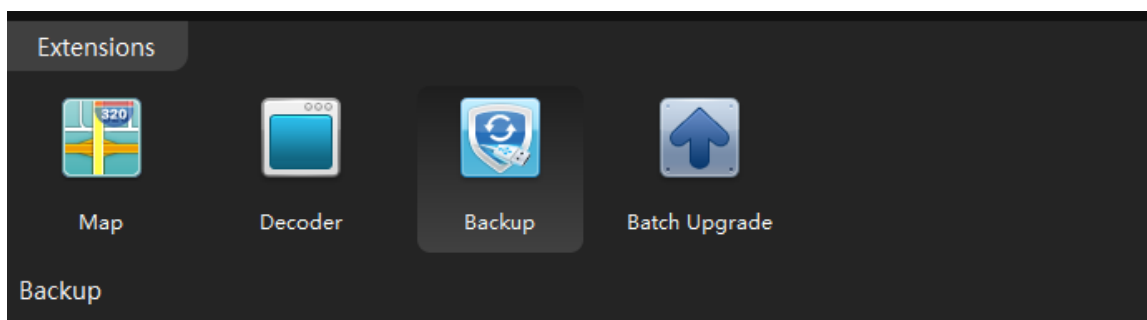
1. Click the download icon  on the time frame, the software will start download the footage from the front device.

NOTE: the icon will change to red flag  when download is completed.

End Time	Record Length	Operation
2017-05-11,10:55:53	10Seconds 4.7MB	 
2017-05-11,11:02:41	6Minutes 212.4MB	 
2017-05-11,11:02:53	12Seconds 5.5MB	 
2017-05-11,11:07:59	5Minutes 159.5MB	 

2. Click the red flag  to view the downloaded file in your PC computer.

3. Return to “Main” , Click the Backup icon .



4. Click the browser next to H.264 Record file and select the recording file from local PC

5. Select the save folder

6. Click H264 to avi Convert to convert the file to avi format.




The screenshot shows a dark-themed interface with a tab labeled 'Record Backup'. Below the tab are two input fields. The first field is labeled 'H264 Record file:' and has a 'Browse' button to its right. The second field is labeled 'Save avi File path:' and has a 'Browse' button to its right and an 'H264 to avi Convert' button to its left.

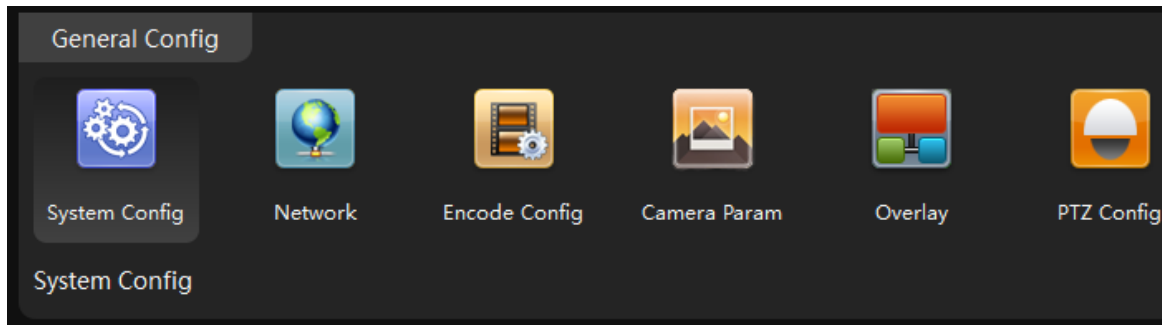
NOTE: You can find the download folder from “Main” -> System Config

Upload snapshot or video to FTP server

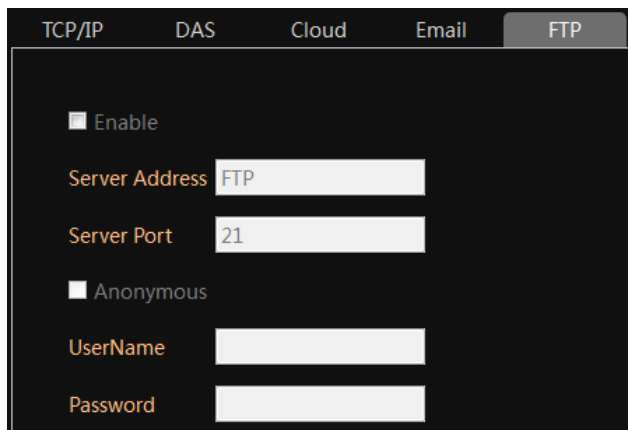
The IP camera can upload the footage or snapshot to the FTP server when alarm event is triggered. Upload footage require TF memory card installed it successfully.

Setup the FTP server:

1. In the "Main" , Enter the "Device Config" , Click icon "Network" .



2. Click the "FTP"



2. Mark the check box "Enable".
3. Fill in the FTP information including server IP, Port, username, password.

Enable

Server Address

Server Port

Anonymous

UserName

Password

Max File Len MB

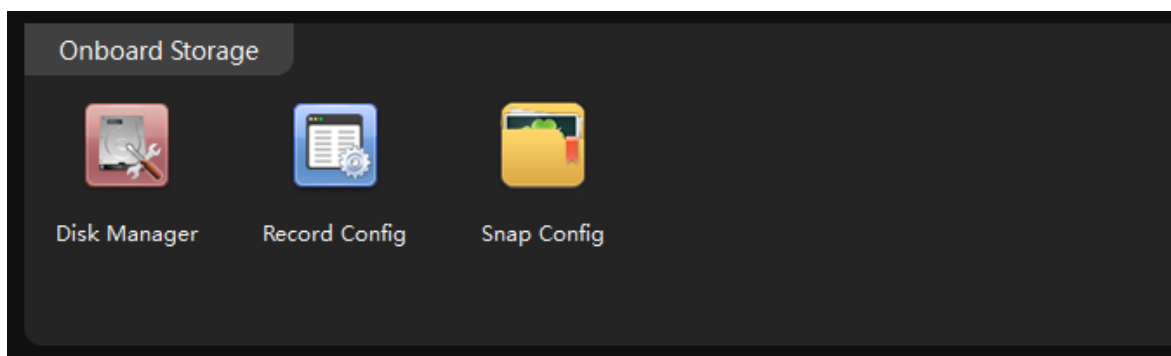
Remote Path

3. Click "OK" to save.

Important: The FTP upload only will activate when the alarm event is detected, such as motion detection, external alarm detection. The camera can not continuous upload the snapshot to a ftp server.

Enable the on-board storage recording

1. In the "Main" , Enter "Device Config", Click "Record Config" 



2. Select the auto, make sure the detect is checked. Click OK to save.

Redundancy

RecordLen Minute


PreRecord Second

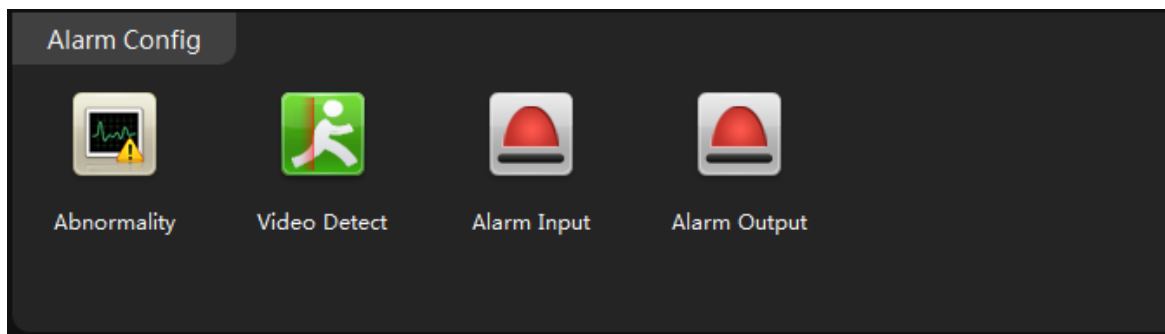
Mode Auto Manual Close

Week General Detect Alarm

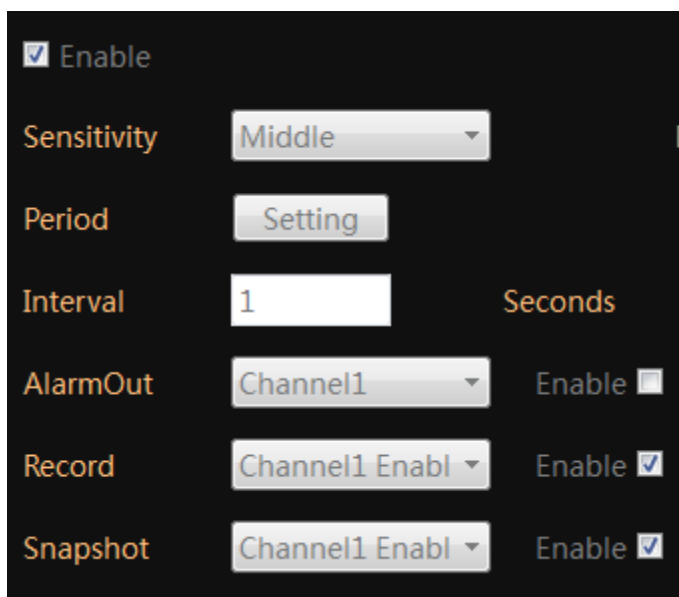
TimeSection	Start	End	General	Detect	Alarm
TimeSection1	<input type="text" value="00:00"/>	<input type="text" value="23:59"/>	<input checked="" type="checkbox"/>	<input checked="" type="checkbox"/>	<input checked="" type="checkbox"/>
TimeSection2	<input type="text" value="00:00"/>	<input type="text" value="23:59"/>	<input type="checkbox"/>	<input type="checkbox"/>	<input type="checkbox"/>

Enable on Motion detection.

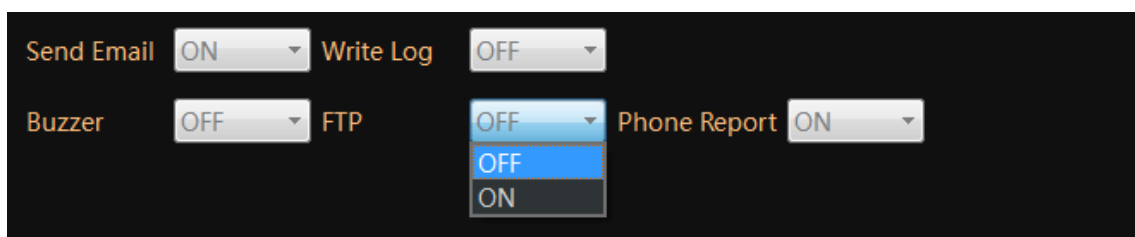
1. In the "Main" , Enter the "Device Config", Click icon "Video Detect", enter a new interface.



2. Click the enable to turn on the motion detection.
3. Enable both "Record" and "Snapshot".



4. Choose "ON" for FTP, click OK to save.

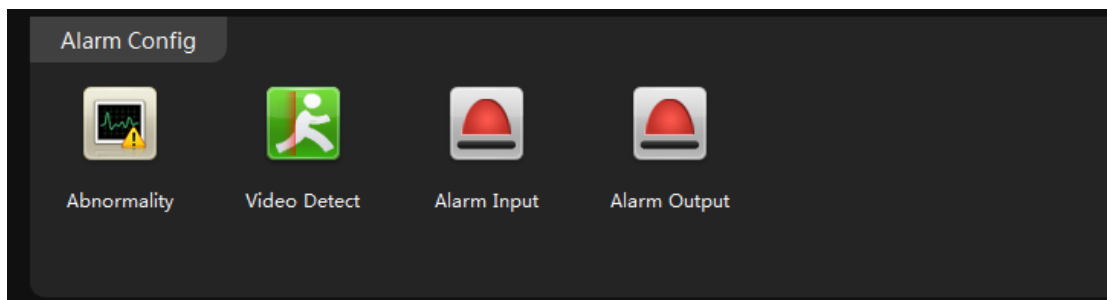


NOTE: The camera will upload the video or snapshot to the FTP server when it catch a motion detection.

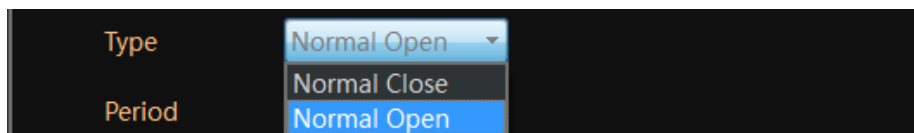
NOTE: Upload video to FTP requires TF memory card installed.

Optional: Enable FTP upload with external alarm input detection.

1. In the "Main" , Enter the "Device Config", Click icon "alarm input" 

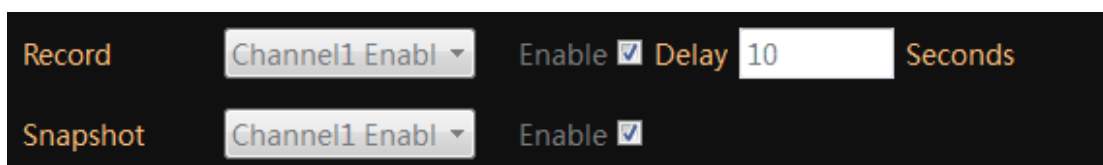


2. Select the alarm type.

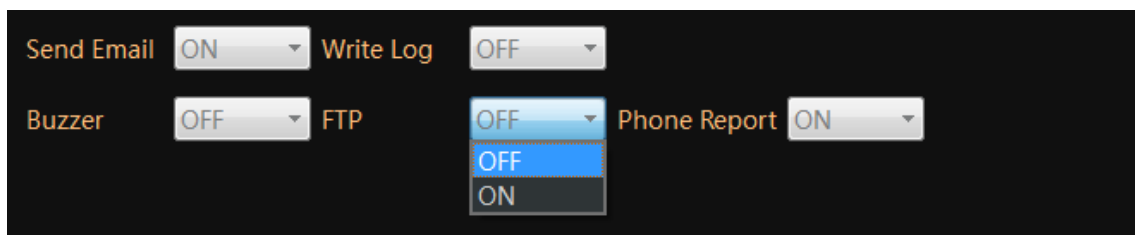


NOTE: Normal Open means the alarm device stays OPEN, it generates digital signal to the camera when the status change to closed.

3. Enable the "Record" and "snapshot"



4. Choose "ON" for FTP, click OK to save.



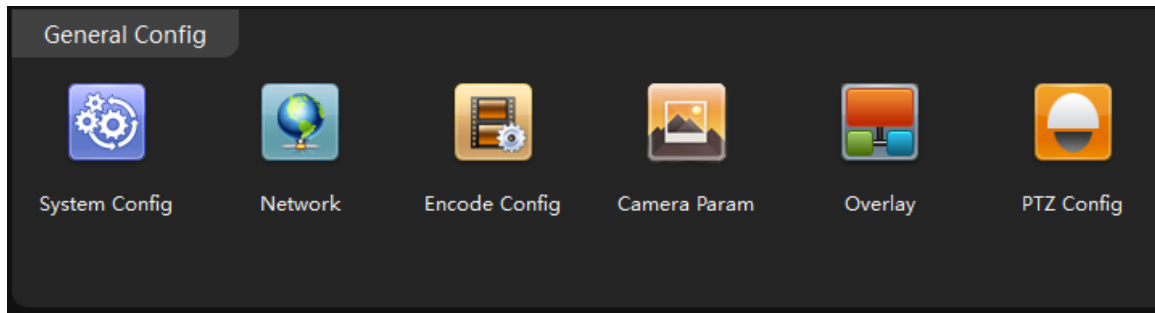
NOTE: The alarm input FTP upload requires external alarm devices such as door contact is connected to the camera properly.

Email notification

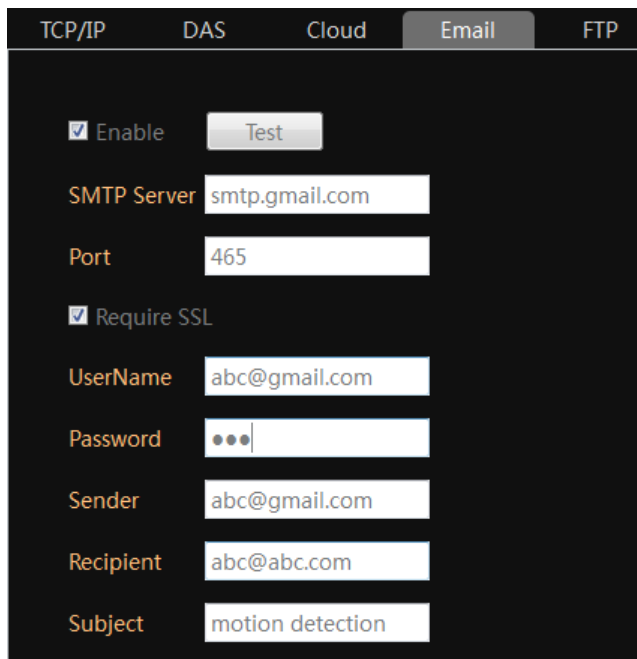
Email Notification is popular function in IP camera and NVR. The user can set the email notification thru event such as motion detection, video masking, alarm input, video loss...

Set email account

1. In the "Main" , Enter the "Device Config", Click icon "Network"



2. Click the “Email”



3. Mark checkbox in front of Test.

4. fill in the SMTP server and Port

NOTE: Use port 465 for “SSL” connection.

5. Fill in UserName, Password, Sender, Recipient, email Subject:


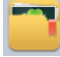
NOTE: The username and sender are full email account, such as abc@gmail.com

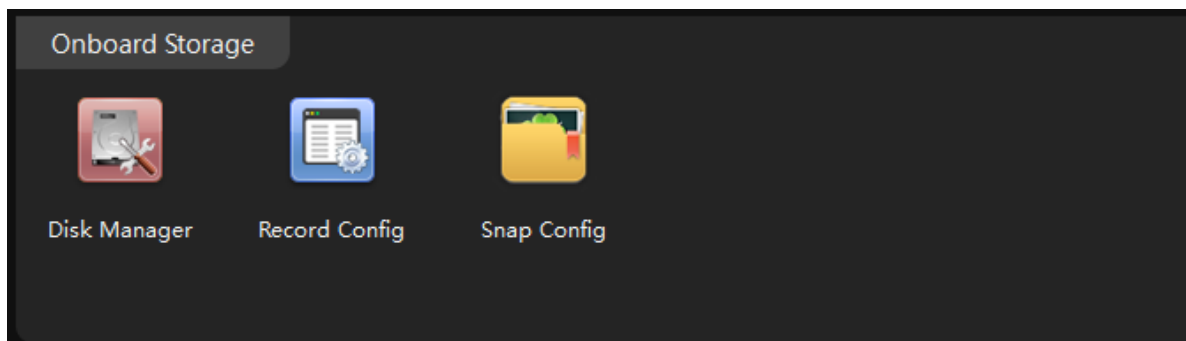
6. Click the “Test”.

NOTE: The system may still show “failed” even the email setting has been done correctly. If you are sure about your email setting, just ignore the warning message.

Important: The DNS setting should be configured correctly, otherwise the camera will not send the email out. Refer page-6 about how to configure network setting manually.

Enable Snapshot

1. In the "Main" , Enter the “Device Config”, Click icon “snap Config” 



2. Click “Auto”, then click “OK” to save



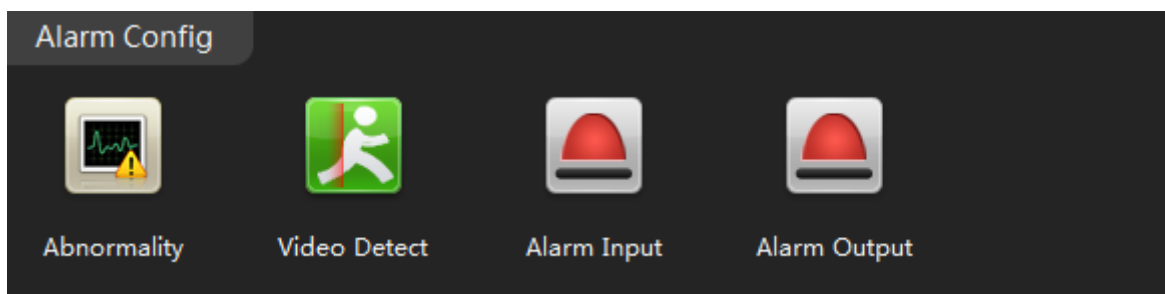
NOTE: Only IP cameras support email notification with snapshot. The NVR doesn't support snapshot in the email notification.

Configure alarm event for email notification.

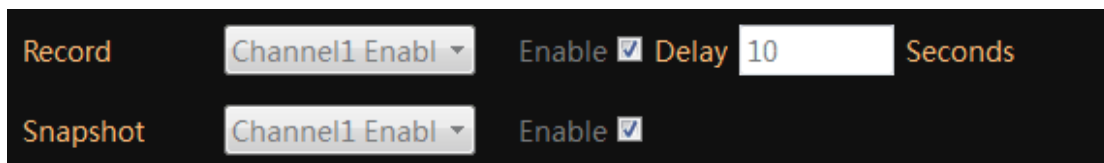
Motion detection Notification – The camera or NVR will send an email when it detects a alarm event such as motion, external alarm, video loss...

Motion Detection Event

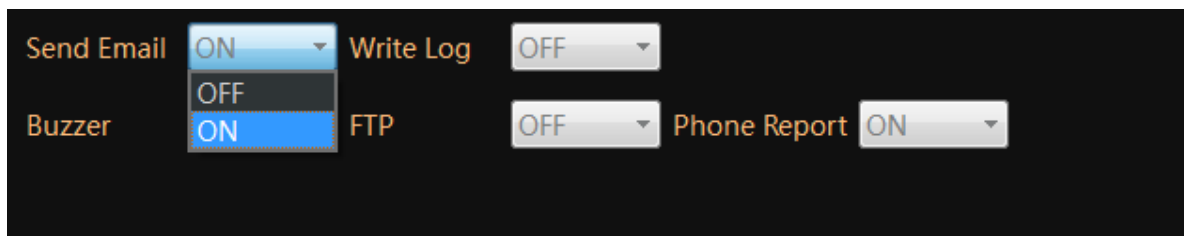
1. In the "Main" , Enter the “Device Config”, Click icon “Video Detect” 



2. Click the “enable”
3. Enable the “snapshot”





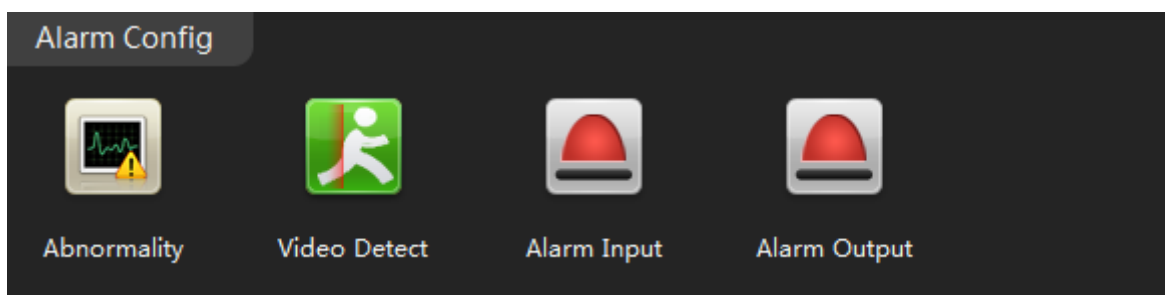
4. Turn on “Send email”, Click OK to save.



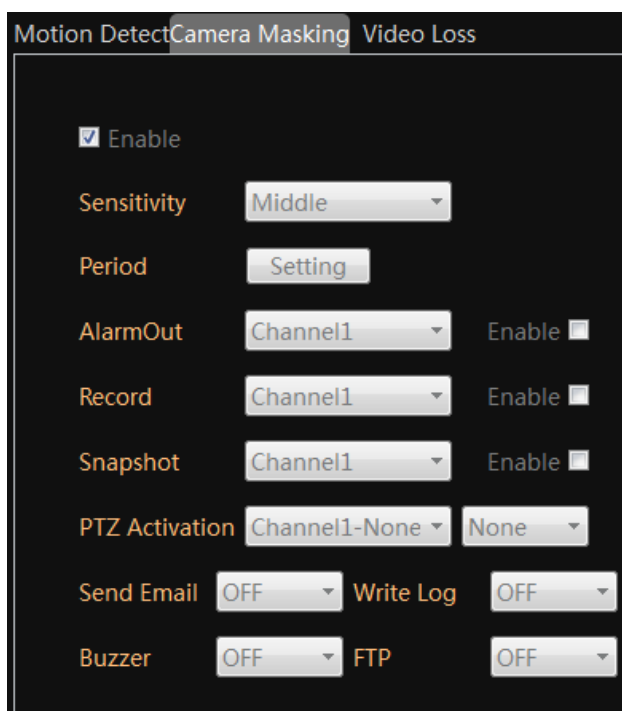
Video Masking Event

The camera or NVR will send an email when it detects camera masking front end.

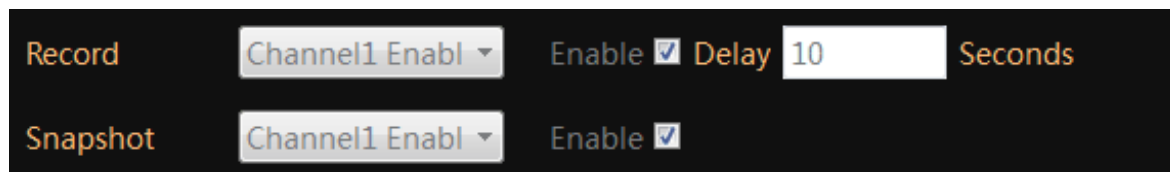
1. In the "Main" , Enter the “Device Config”, Click icon “Video Detect” 



2. Click “Camera Masking”



3. Enable the “snapshot”

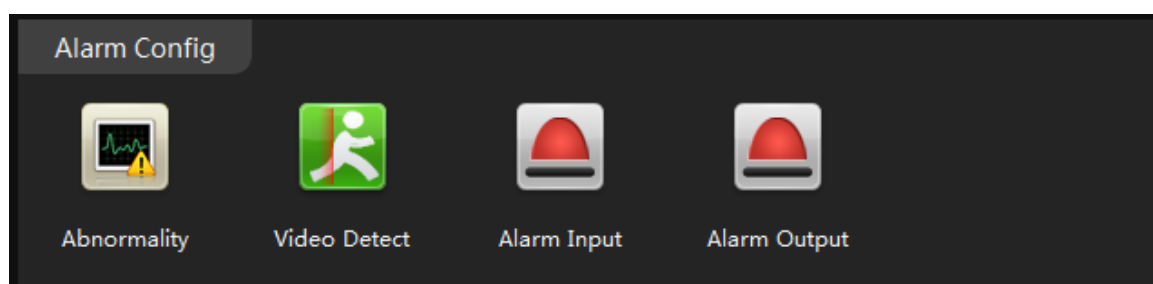


4. Turn on "Send email", Click OK to save.

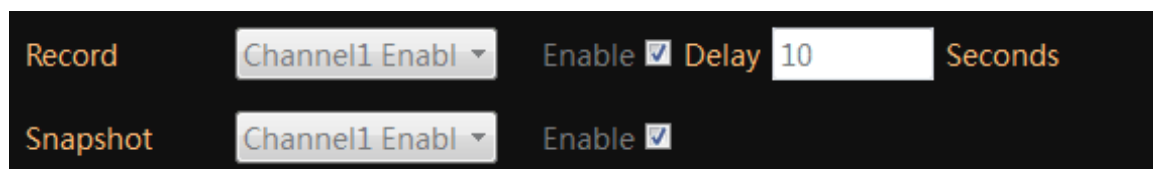
Alarm Input Event

The camera or NVR will send an email when it detects digital input from external alarm device such as PIR sensor, door contact, Beam.

1. In the "Main" , Enter the "Device Config", Click icon "Alarm input" 



2. Click the "enable"
3. Enable the "snapshot"

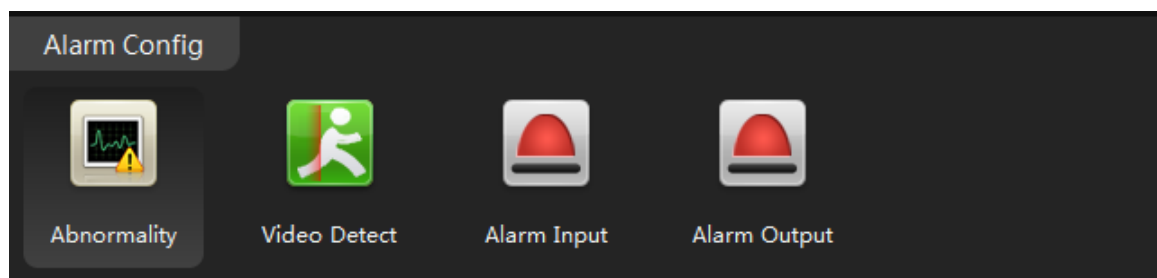


4. Turn on "Send email", Click OK to save.

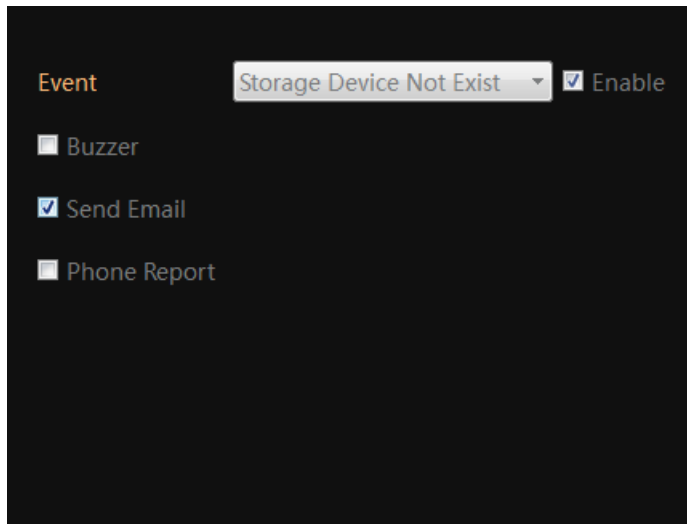
Storage Device Not Existed Event

The IP camera or NVR will send an email when it detects the TF memory card or hard drive accessing failed.

1. In the "Main" , Enter the "Device Config", Click icon "Abnormality" 



2. Mark the checkbox "Enable"
3. Select "Storage Device Not Exist" from Event list.



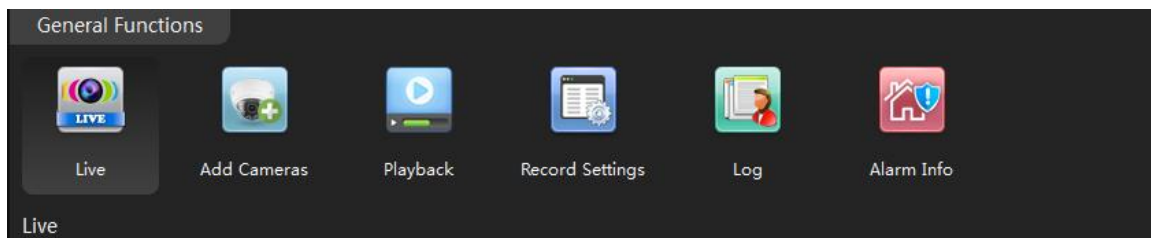
4. Check "Send email"
5. Click "OK" to save.


Other options

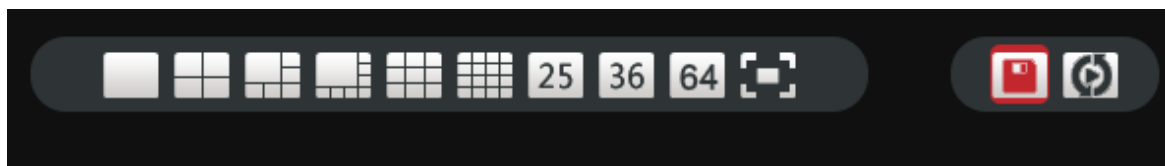
Video View

User can record the current video layout and recall it later.

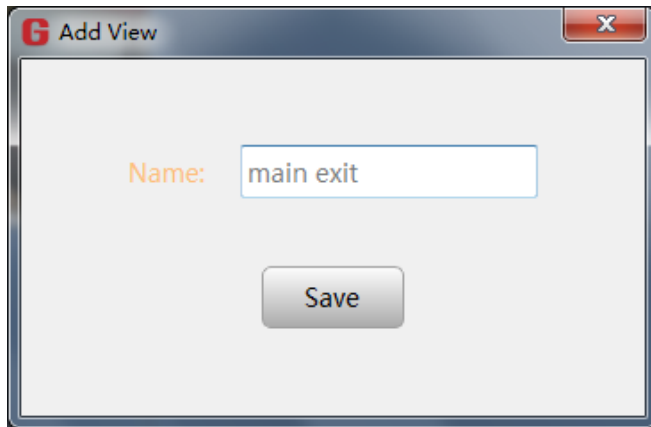
1. In the "Main" , click icon "Live"



2. Click this icon  in down corner to save current video layout



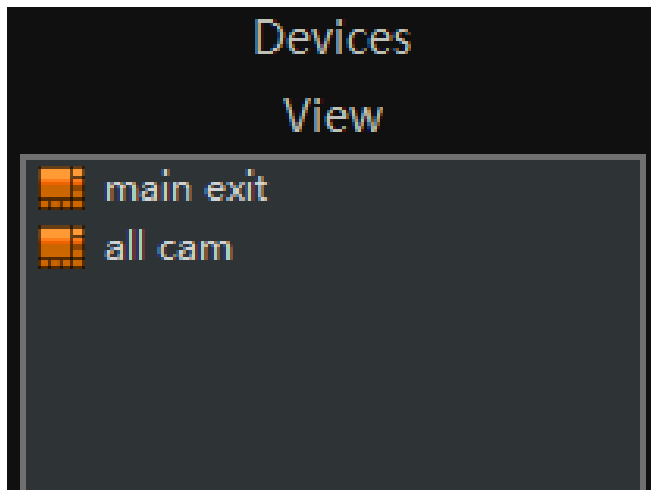
3. Name current layout, click Save.



4. Click the "View" to find the saved layout



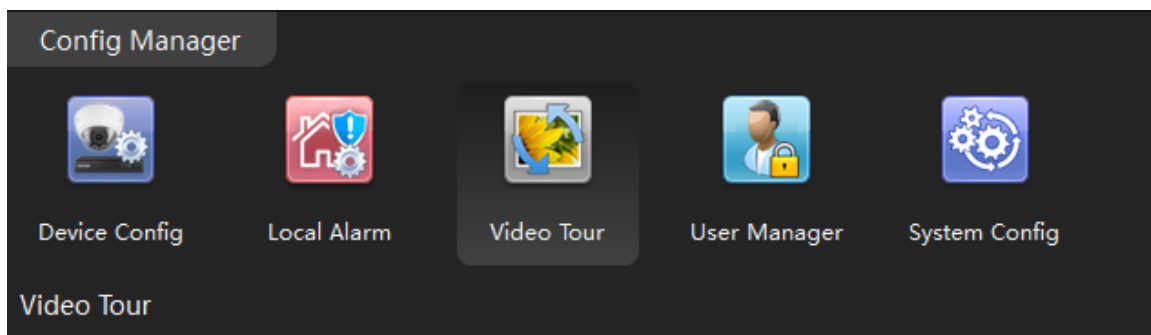
5. Click name to view the call up the saved layout.



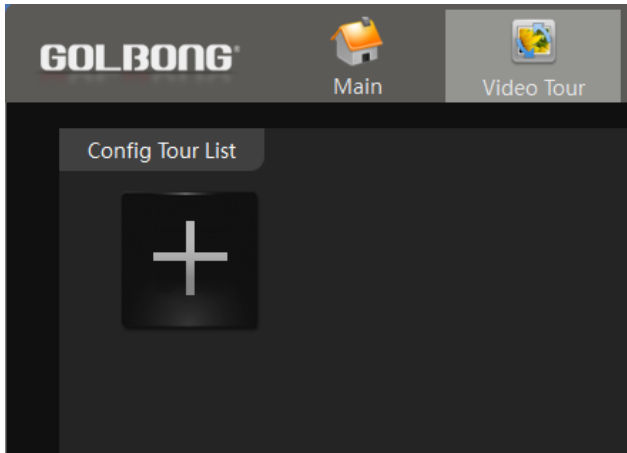
Video Tour

User can pre-set the video layout and make it displays sequentially.

1. In the "Main" , click icon "Video tour"



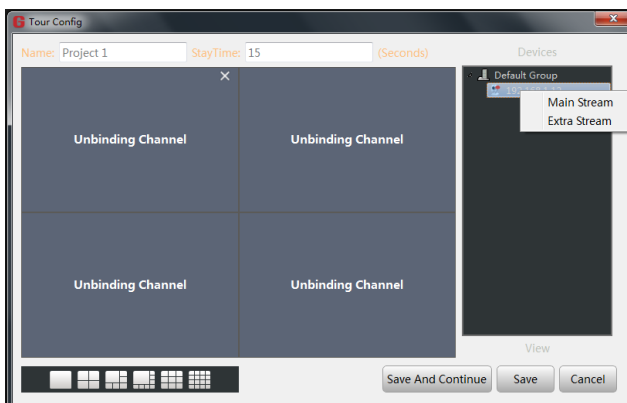
2. Click + to program the new video layout.




2. Name the layout, fill in the dwell time between two layout.
3. Click a window to activate that channel.

NOTE: Before binding a camera to a window, it should activate that window.

4. Right click the camera list to select the main stream or sub stream for that window.

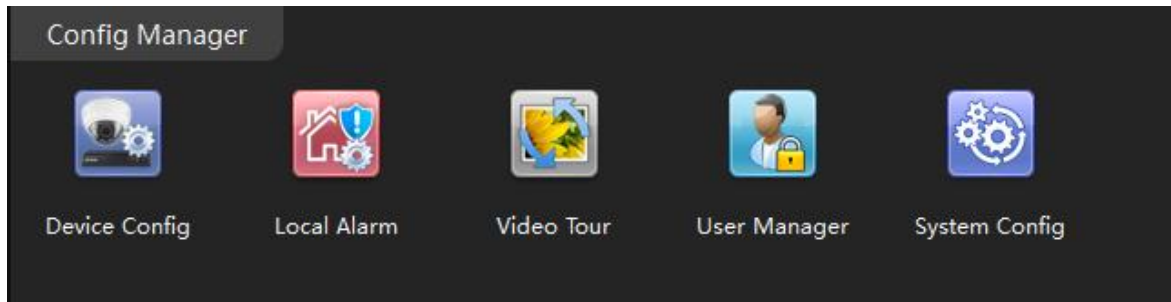


5. repeat step 3 until you finish all the binding.
6. Click "Save and continue" to add a new layout.
7. Repeat step 1 until you add all the layout.
8. Return to "Live", click the tour icon , the CMS5 will start display the layout in sequentially
9. Click tour icon again will stop the video tour.

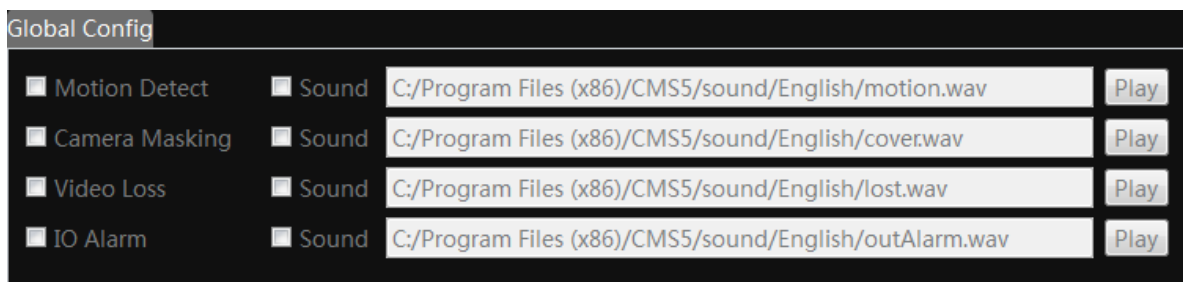
Local Alarm

User can set the sound alert to notify the operators on the PC



1. In the "Main" , click icon "Local alarm"

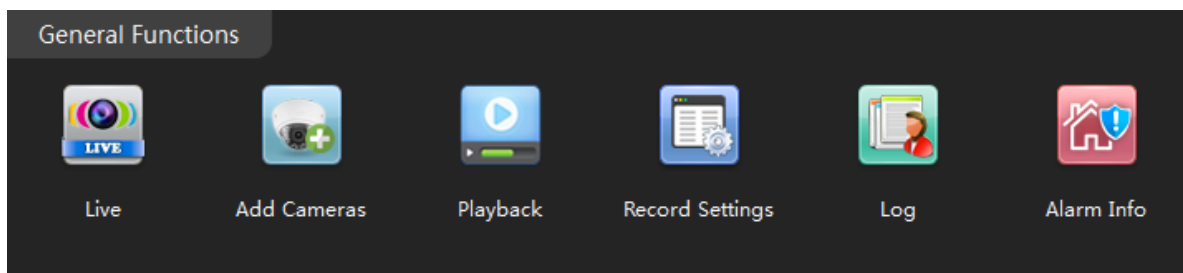


2. Mark the alarm type, the software will log the alarm to your PC computer.



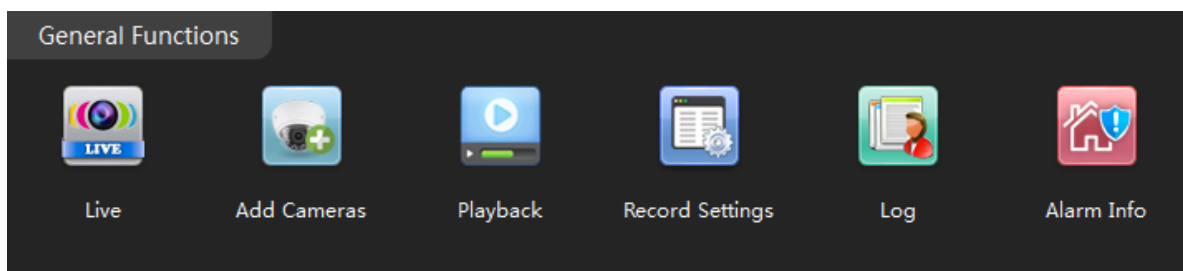
3. Mark the sound, CMS5 will play the audio file when alarm is triggered.

4. Return Main , click icon Alarm Info , you can check the alarm log.

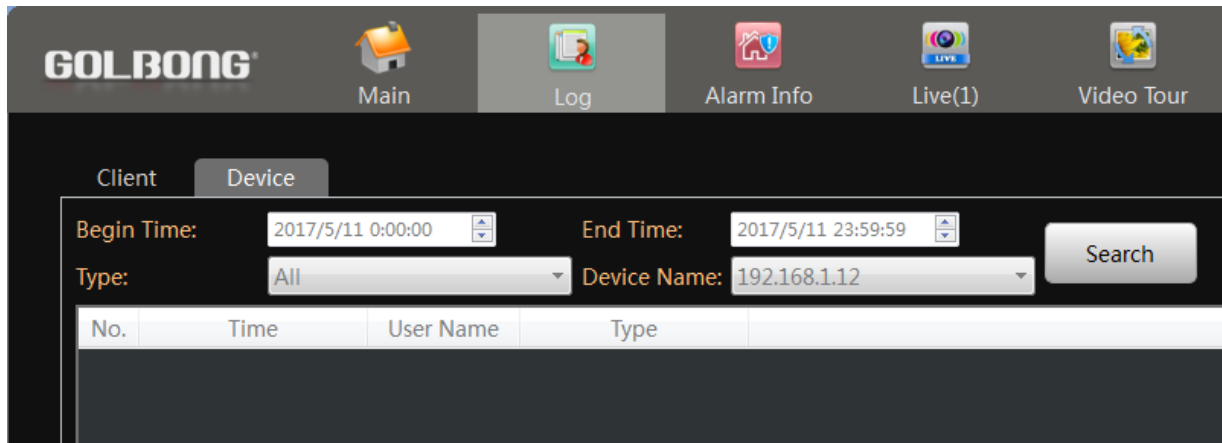


Check the log

1. In the "Main" , click "Log" 



2. Click the "Device" to search log storage on the camera.



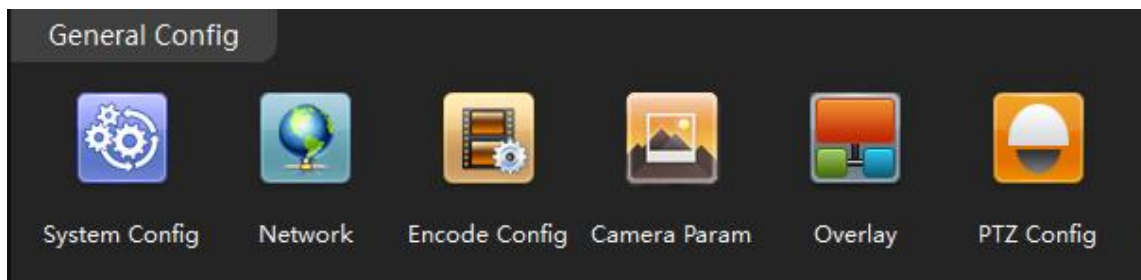
3. Select the time frame, log type, Device name
4. Click Search, the result will appear.

No.	Time	User Name	Type	Remark
1	2017-05-11 01:53:07		StorageManager	Disk Over
2	2017-05-11 07:29:51		StorageManager	Disk Over
3	2017-05-11 09:01:36		UserManager	[Modify Password]
4	2017-05-11 09:01:52	admin	UserManager	Logout
5	2017-05-11 09:02:02	admin	UserManager	[Login]islocked!

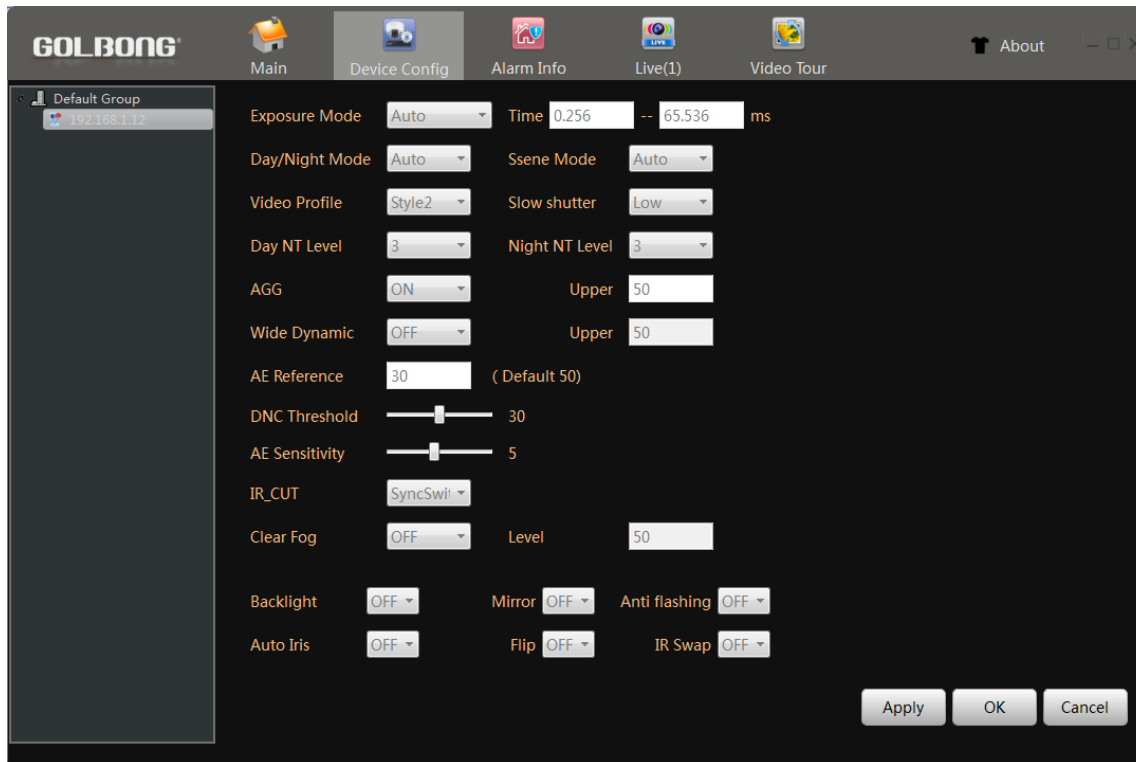
NOTE: Some of the log may requires turn on the "write log" in the Main -> Device Config -> Alarm Config.

Setting Camera Parameters

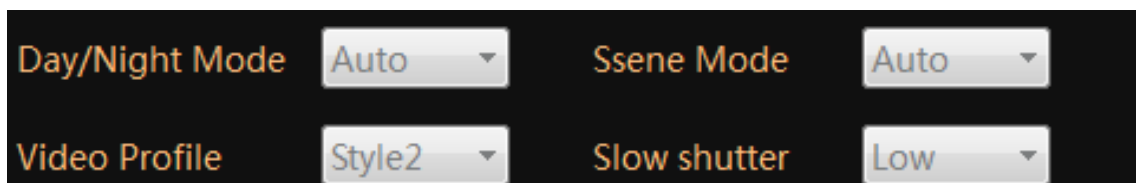
1. In the "Main" , click "Device Config" icon
2. Click "Camera param" 



3. A new screen appear.



3. Day/night Mode – Select “Color”, the camera will always stay on color.



NOTE: If the environment has significant street light at night, the camera can generate nice color night vision with color mode

3. Slow Shutter – Select “None” will erase motion blur, but low down the sensitivity.

4. Wide Dynamic – Turn on dynamic can improve the performance with strong contrast, but scarify the color reproduction and generate more noise in low light condition.

5. IR_CUT – select auto switch, the camera will switch to black and white and sense the infrared basing on the visible light illumination.

NOTE: Select auto switch can make the covert camera see infrared on the sense at night.

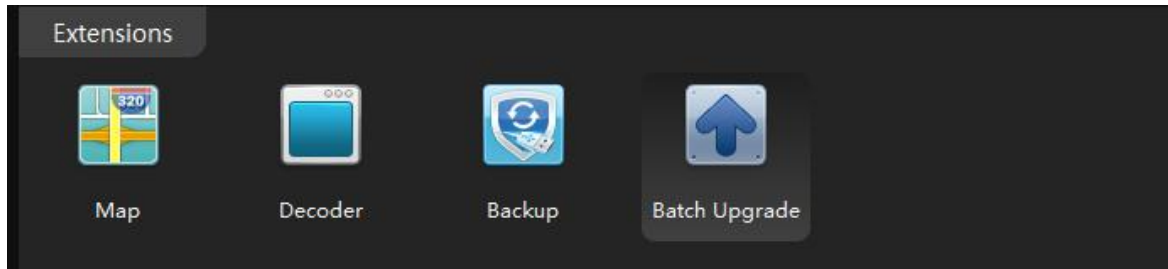
6. DNC Threshold – Change the threshold to switch between color and black/white.

NOTE: If the camera keep switch around between color and black/white, DNC threshold can improve the performance.

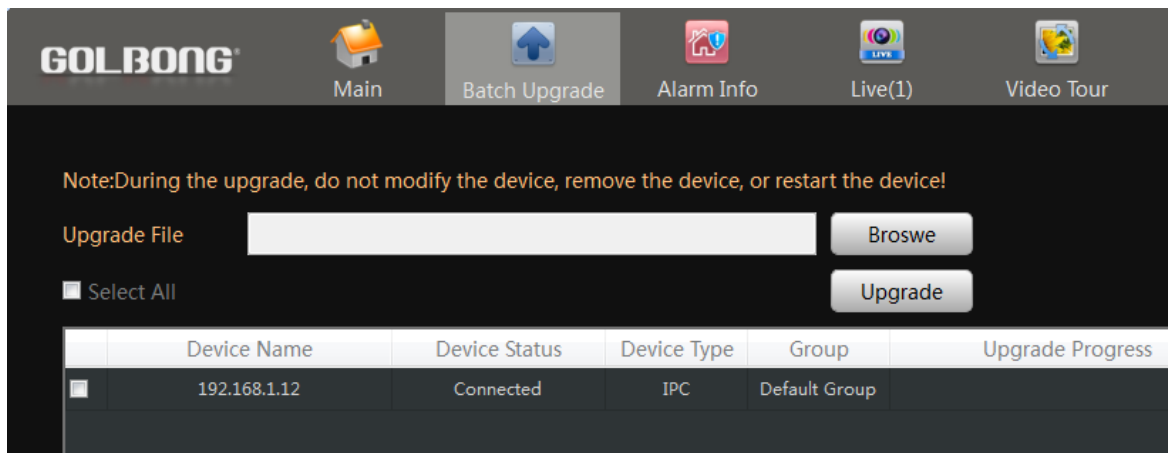
7. Mirror & Flip – Turn the image upside down. It can help deploy the camera from wall mount to ceiling mount.

Installing a new Firmware

1. In the "Main" , click icon "Batch Upgrade" 



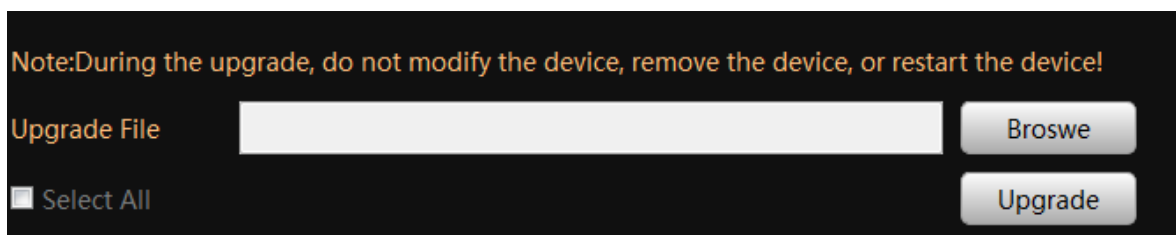
2. Select the camera/NVR from the list



IMPORTANT: Different model could use different firmware, unless you are sure all the mode share the same firmware, don't check "Select All"

3. Click the Browser to find the firmware.
4. Click "Upgrade" to upload the firmware.

WARNING! DO NOT power off the camera until it shows upgrade successfully in the "Result"



Connecting to an NVR/DVR

Connect your cameras to recorder

a. Auto Connection - Quick Set:

1. Right-click and select "Quick Set".



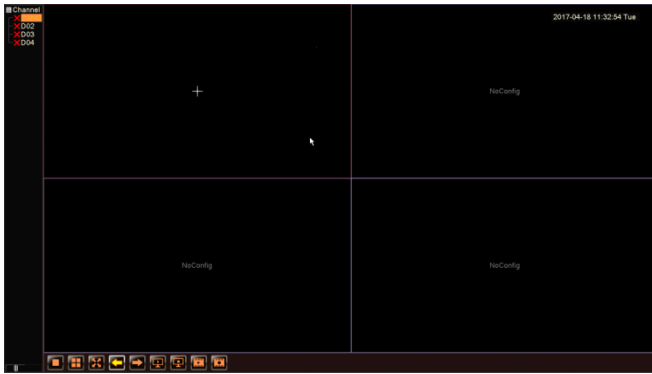
2. The NVR connects to your camera automatically. Click "Apply" to confirm.



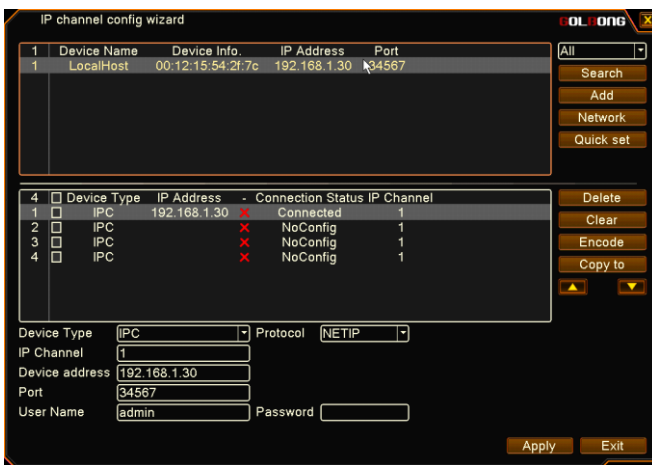
NOTE: Input the username and password at the bottom of the dialog box if it requires. The default password is not required.

b. Add the camera manually


1. Move your mouse to the channel. The icon “+” appear in the middle of the channel.




2. Click the “+” icon to search online devices.
3. Double-click the camera in the list. It becomes “highlighted and appears on the below list. When “Connection Status” change to “Connected”. Click “Apply”.




NOTE: Insert the username and password at the bottom of the dialog box if it requires.

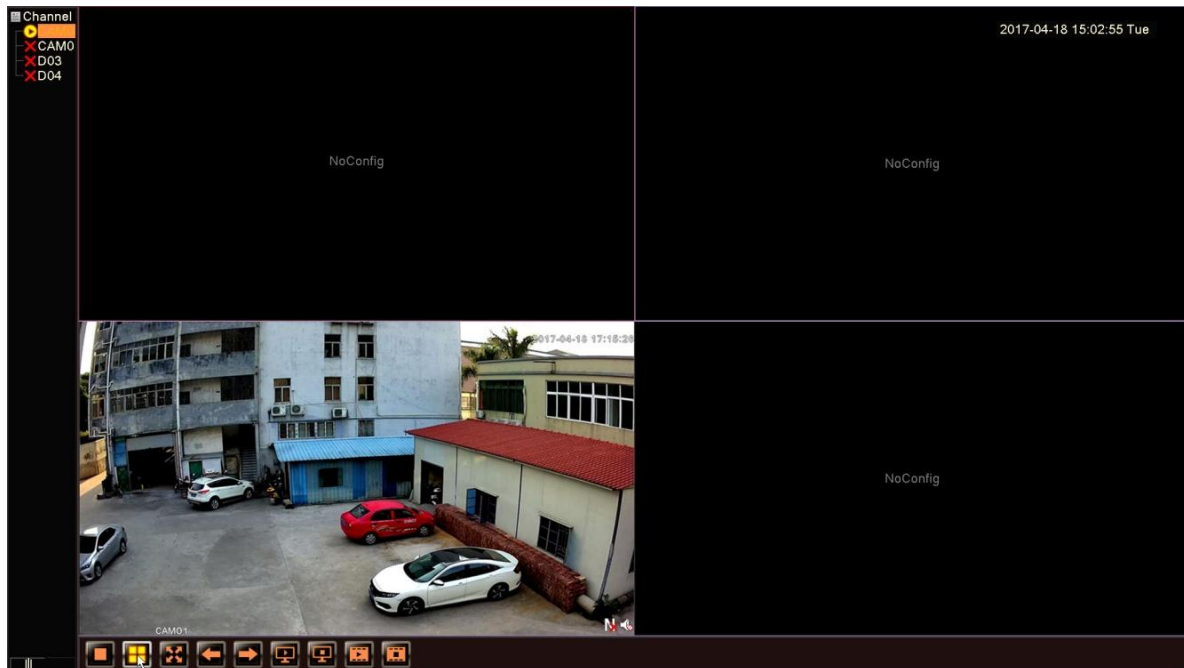
NOTE: You can click the red cross icon  to delete the added cameras

Get the live

1. Single channel: Click the icon  or double-click the channel name in the list.



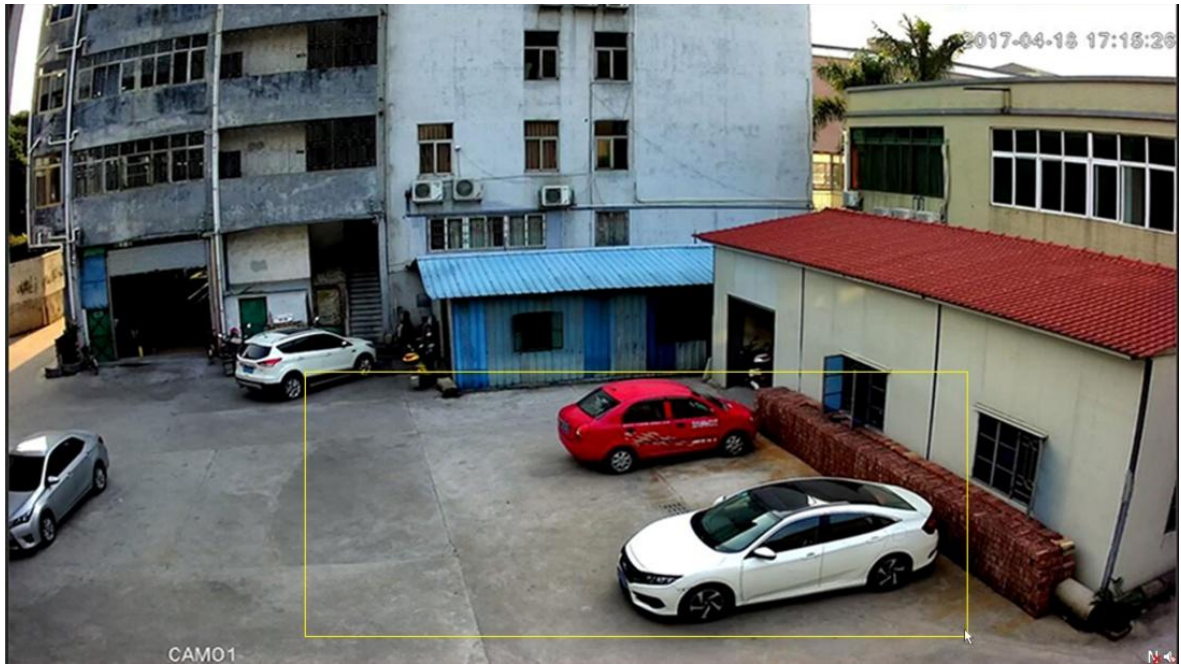
2. 4-channel: Click the icon  at the bottom of the screen. You can long-press the camera and drag the camera to one of the four channel position.




3. Full Screen: Right-click and select "Full Screen".




4. Leave Full Screen: double-click the on screen or right-click and select "Leave Full Screen".
5. Digital Zoom: Left-click your mouse and draw a yellow square to the targeted area. Move your mouse to the targeted area and a magnifier icon appears. Click the area. The picture is enlarged. Double-click to get back to the original screen



Set Camera Image Quality

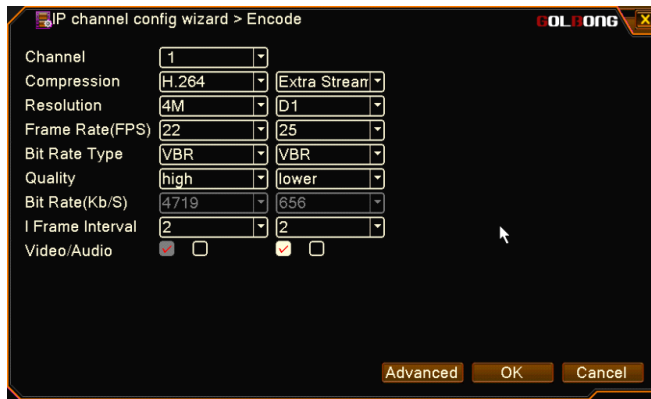
1. In the live, Click the icon  on right top corner. A new dialog appear.



2. Click the camera in the list, it turn to highlighted. Click “Encode” button  on the right side.



3. Configure sub stream in the left column and extra stream in the right.

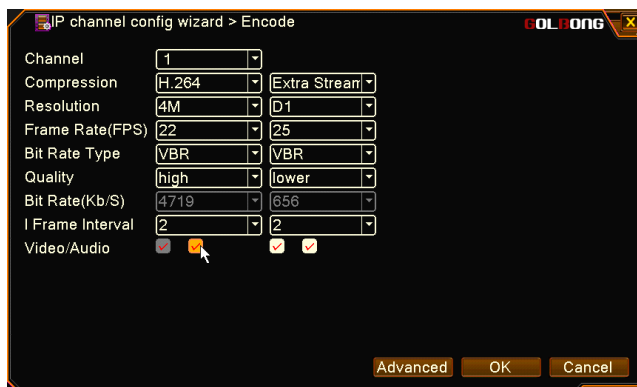


NOTE: Resolution - Main stream-preview HD/SD , and it affects the viewing quality of the video. Sub stream is more suitable for remote viewing, it can save bandwidth.

NOTE: Frame Rate - Frame per seconds. User can select the value of the frame rate, the bigger the value, the better the video fluency.

Optional: How to activate the audio in your NVR

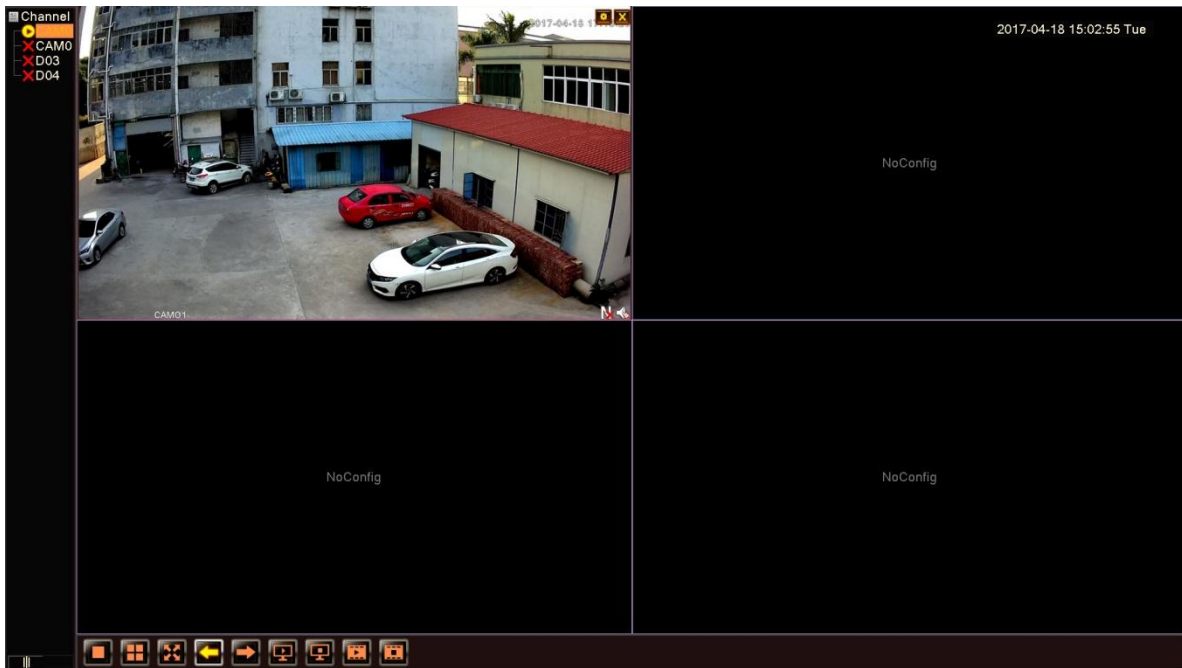
1. Mark the checkbox right at the bottom of the columns.



NOTE: Your camera must support audio and connects to audio pick up.

NOTE: The recorder should connect to speaker or amplify.

2 . Get back to the live. The speaker icon  means silent mode. Click it to activate .




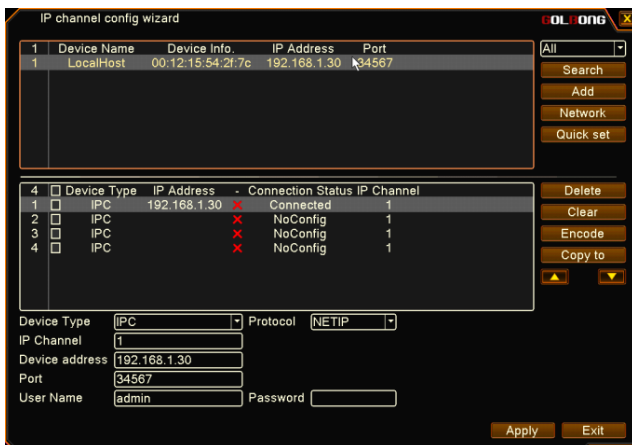
Optional: Change the IP address of the camera from NVR.

1. In the live, Click the icon , a new dialog appear.



NOTE: You can click the cross icon  to delete channels directly.

2. Click the camera and it turns to highlighted. Click "Network" button  on the right side.




3. Press "Auto assigned". The recorder will assign static IP address to your IP camera automatically.

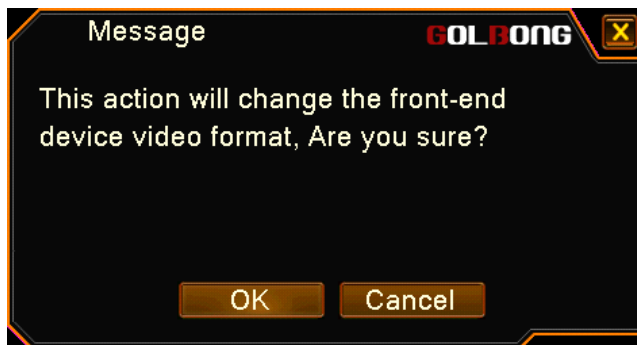


NOTE: Input the camera's password if it requires.

Optional: Switch PAL/NTSC at front-end device video format

If your device video format makes conflicts with your recorder, the icon  appears.

Double-click the icon and a message pops up. Click "OK". The front-end camera will reboot and becomes consistent with your NVR.

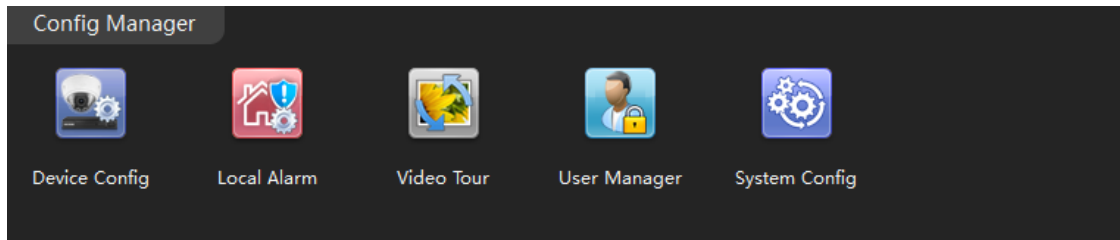


Connecting to an Onvif Server

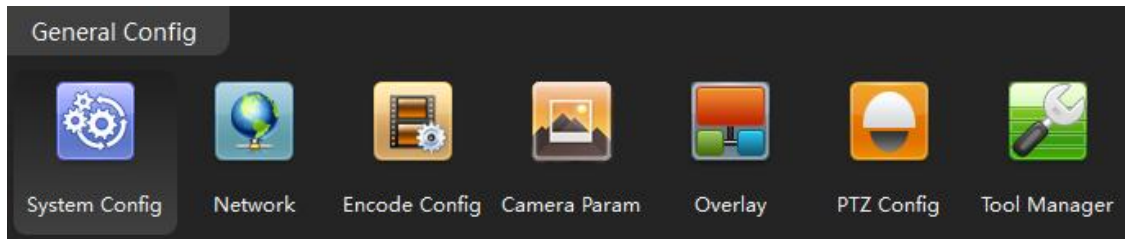
User can connect IP camera to 3rd party software or standalone NVR which support onvif profile-S. The motion detection will send thru notification message to the recorder.

Discover the onvif port.

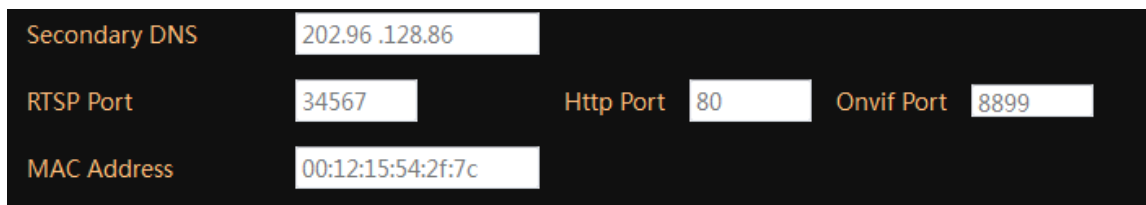
1. In the "Main" , click "Device Config"



2. Select the camera from list, click icon “Network”



3. Find the port number next to onvif.



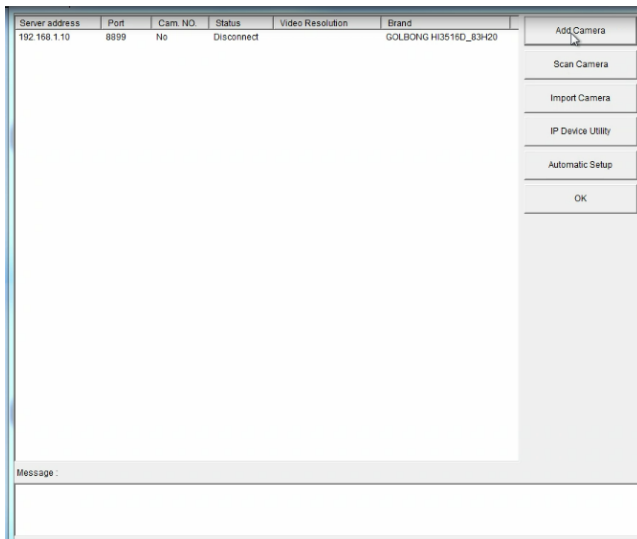
NOTE: you can change onvif port as well as TCP/IP port.

Connect to 3rd party VMS software (use Geovision as example)

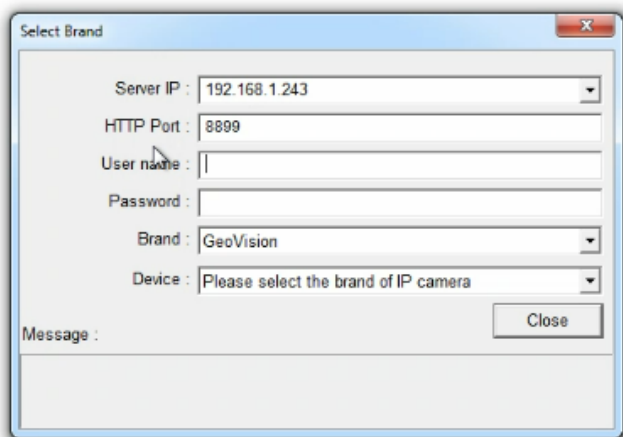
1. Click icon “System configure” and select “IP camera install”, a new dialog pop-up.



2. Click “Add camera”

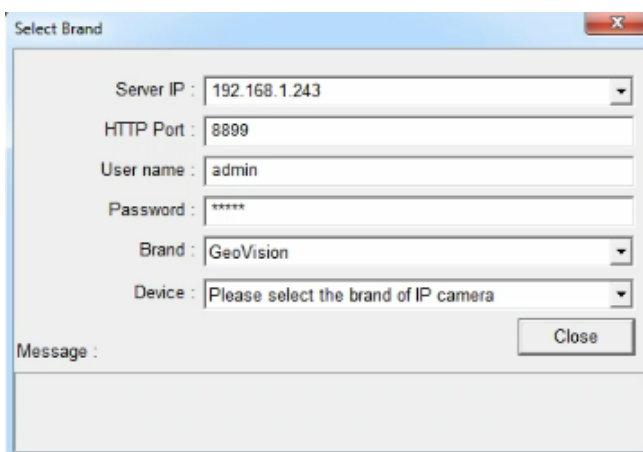


3. Fill in the IP address, HTTP port



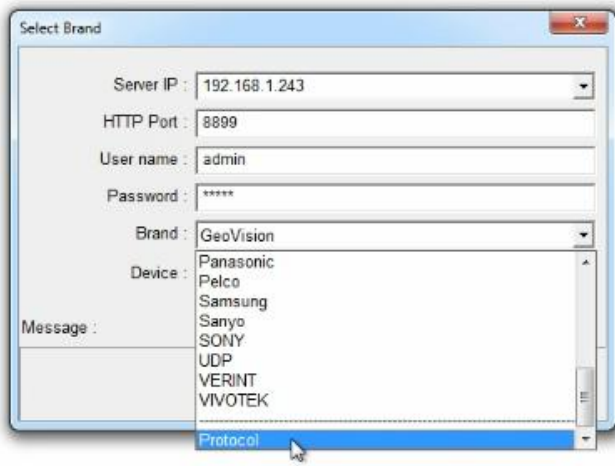
NOTE: HTTP port is the onvif port in the camera

4. Fill in the username and password.

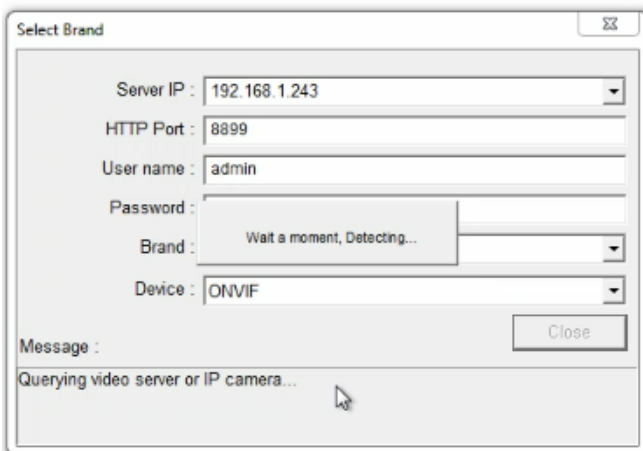


NOTE: Follow page-10 you can create a password for the IP camera.

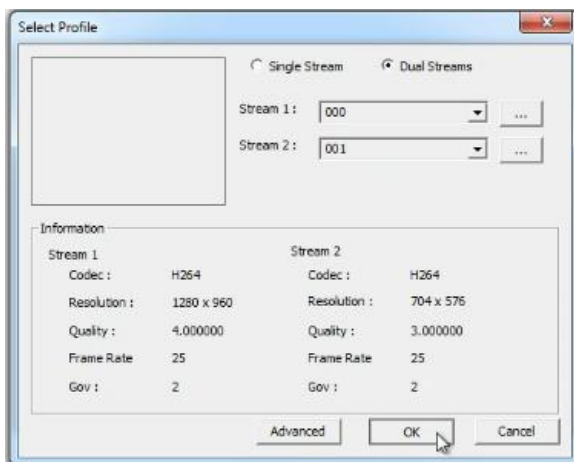
5. Select "protocol" from brand list



6. Select "Onvif" from device, video profile will pop up in the screen.



7. Click "OK" to save. Now you can assign the camera to a specific channel and watch the live.

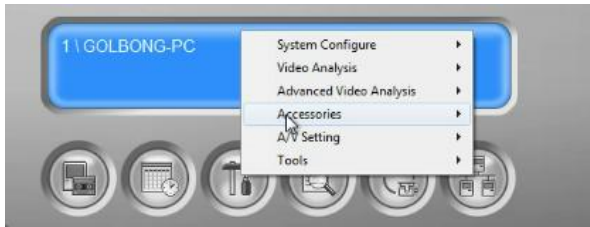


NOTE: Different software may have different process to add the camera.

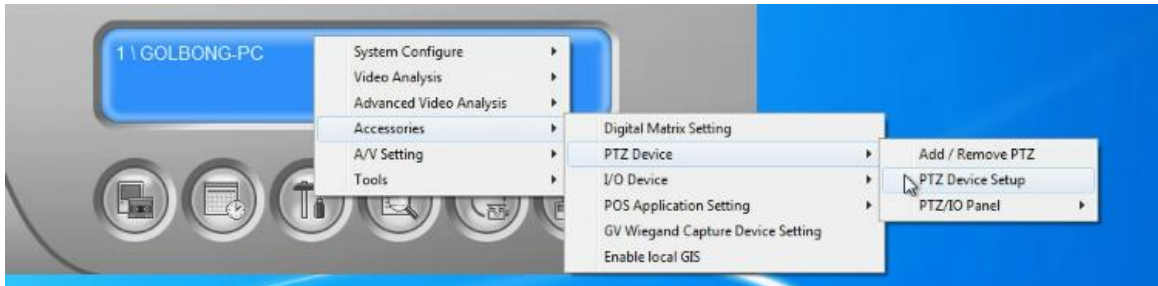
Enable PTZ pane

User can enable PTZ panel for PTZ camera.

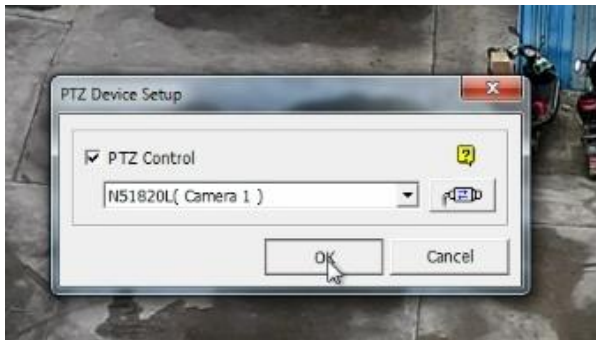
1. Click icon "System configure" and select "Accessories",



2. Find the “PTZ Devices”, click “PTZ Device setup”, a new screen pop-up



3. Check the PTZ control, click “OK” to save, a new icon appear on the right.



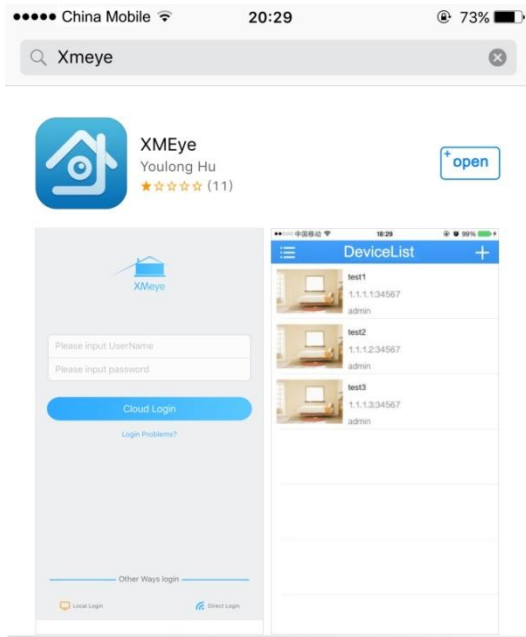
4. Click the PTZ icon, you can control PTZ camera now.



Smartphone or Tablet Apps

Download app

1. Download: Search and install the app “XMEYE” in app store or Google play.



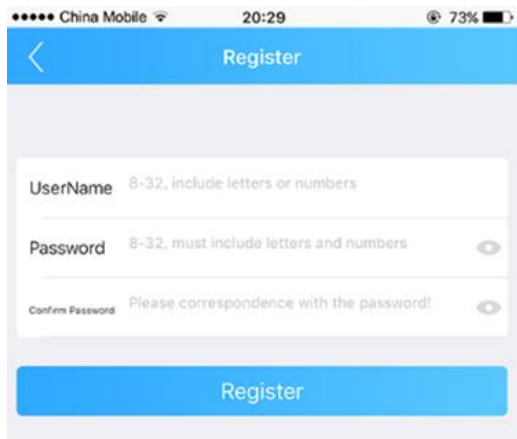
Registration

1. Register: click “login problems”, press “register” to create a new account.



3. Input E-mail, press the icon “get code” to receive a register code.

4. Create a username and password after receive the code.

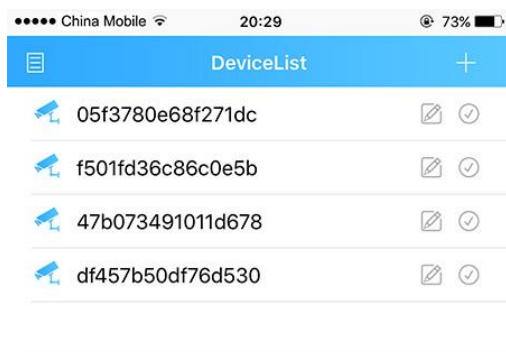


NOTE: the email must be valid to receive the code. The mail box also will use to recover the password in future.

4. Login: return to the login page, input your username and password, click "Cloud Login".

Connecting to your ip camera on an smart phone or tablet.

1. Click the icon "+" on the upper right corner to enter search screen.



2. Press the "search" button  .

China Mobile 20:29 73%

Add Device

Manual Add Quick Configuration

Device Name

Serial Number/IP/Domain Na... 

admin

Password

Port:Port

OK Cancel



NOTE: Make sure your phone has connected to your the local network.

3. Select the check-box, then press the button icon“ Add” .

China Mobile 20:29 73%

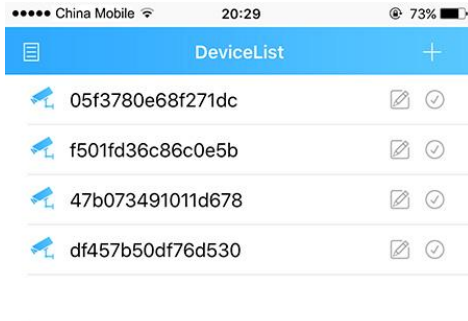
<input checked="" type="checkbox"/>	05f3780e68f271dc 34567	admin Password
<input checked="" type="checkbox"/>	f501fd36c86c0e5b 34567	admin Password
<input checked="" type="checkbox"/>	47b073491011d678 34567	admin Password
<input checked="" type="checkbox"/>	df457b50df76d530 34567	admin Password

Select All Add Cancel

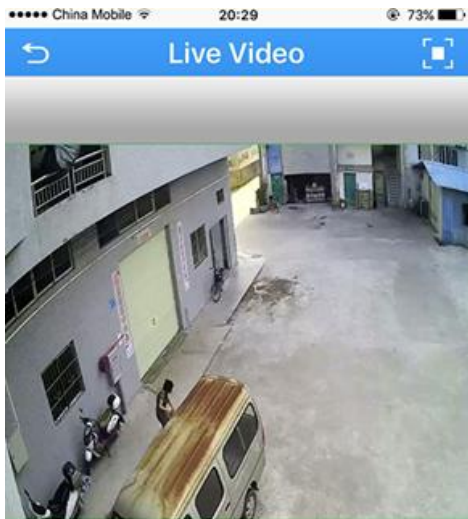
NOTE: Input the password if required, the default password is blank.

Live view interface

1. Click the camera name in the device list, the live view will display.

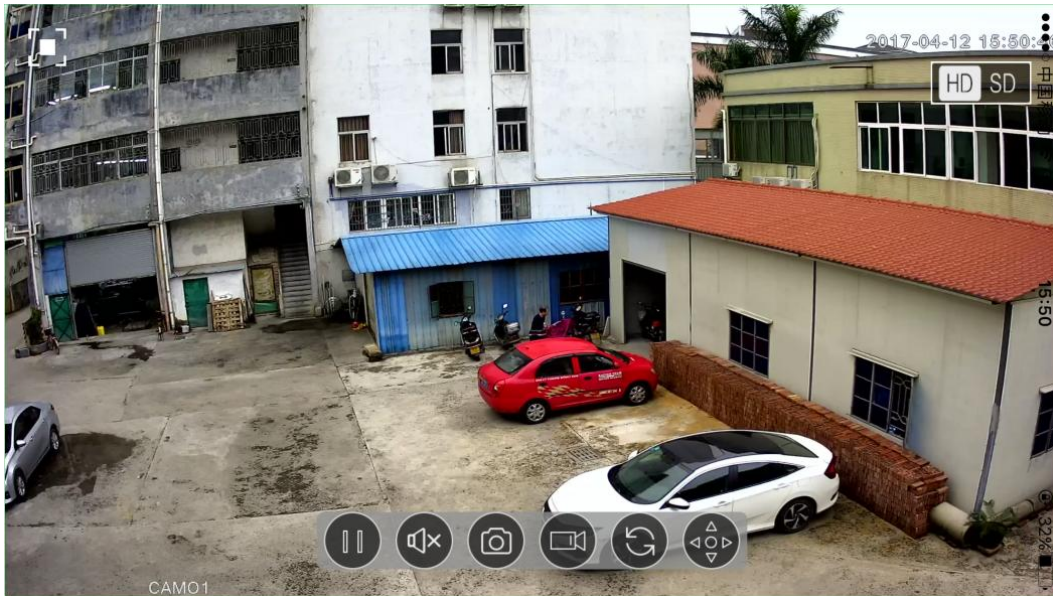


2. Press the square icon on the upper right corner to enlarge the video to full screen.



NOTE: The users can zoom in/out on the screen with fingers.

3. Click "SD/HD" to choose the video quality.



NOTE: “SD”: standard definition; “HD”: high definition.

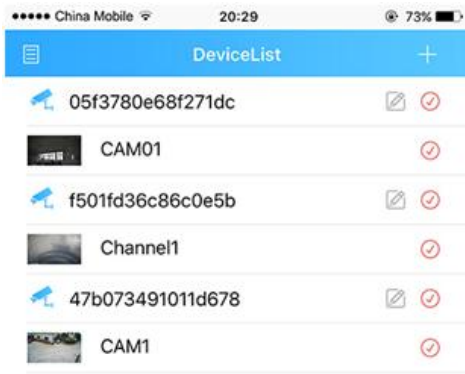
4. 4 channels: In the live video page, choose the number “4”, click “+” to add new channel to live.



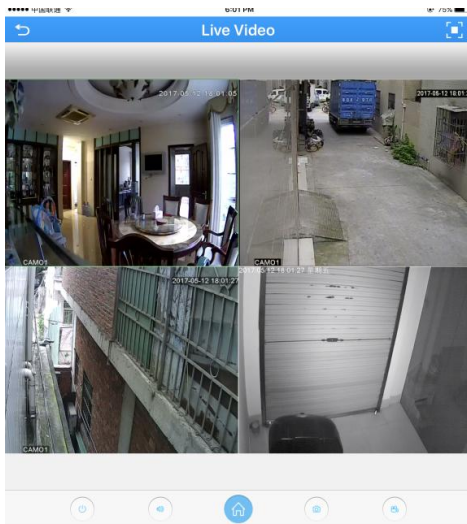
NOTE: User can select 1/4/9/16 channel


5. Touch the tick icon  on right to select the camera.

NOTE: The tick will change to red once selected.



6. Press the “Start preview” at the bottom to watch multi-channel video.




7. Press speaker button  to hear the voice from the camera



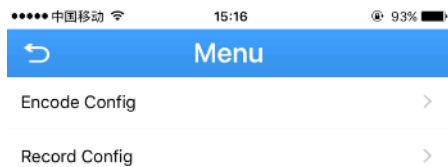
NOTE: Your camera must support audio and connects to audio pick up.

Optional1: How to change the video quality to adapt to low bandwidth network.

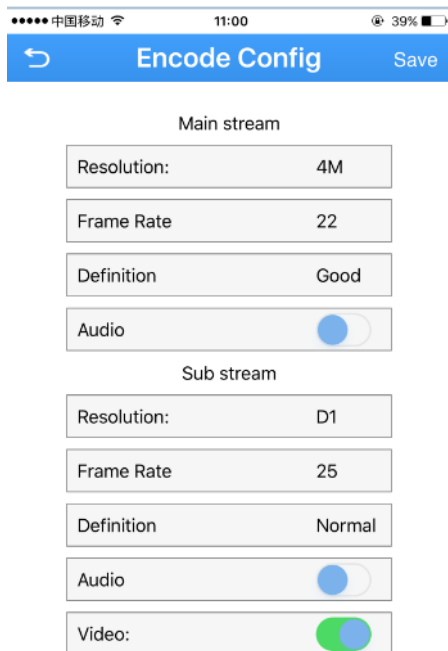
1. In the Live Video page, click the Home icon 



2. Touch “Encode” in the menu




3. Adjust the main stream and the sub stream to adapt to your network bandwidth.



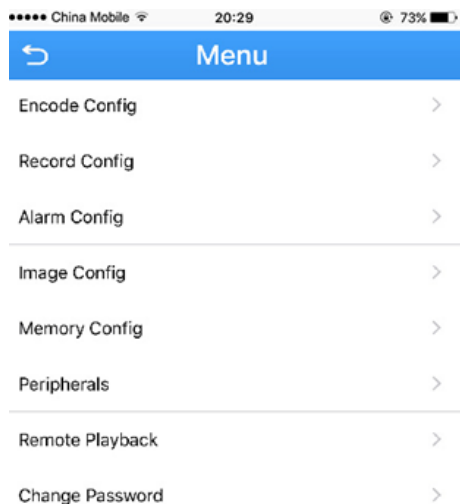
NOTE: higher frame rate and resolution require higher bandwidth

Set a Password for the Camera.

1. In the Live Video page, click the Home icon 



2. In the Menu page, press the “Change password ”



3. Input old password and a new password. Click “Save”

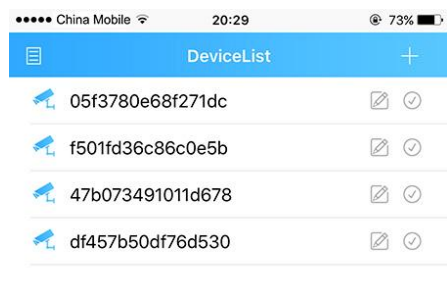


NOTE: default password is blank.(No need)

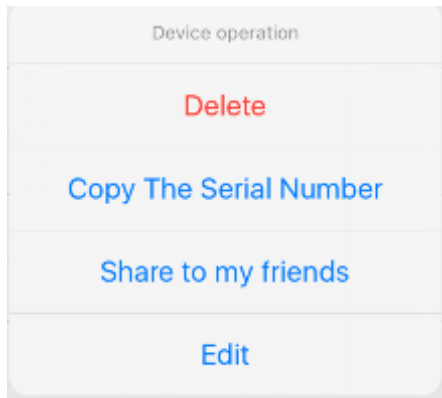
4. Click return icon  to enter Device list



5. click the edit icon , a new dialog pop up



6. Select “Edit”

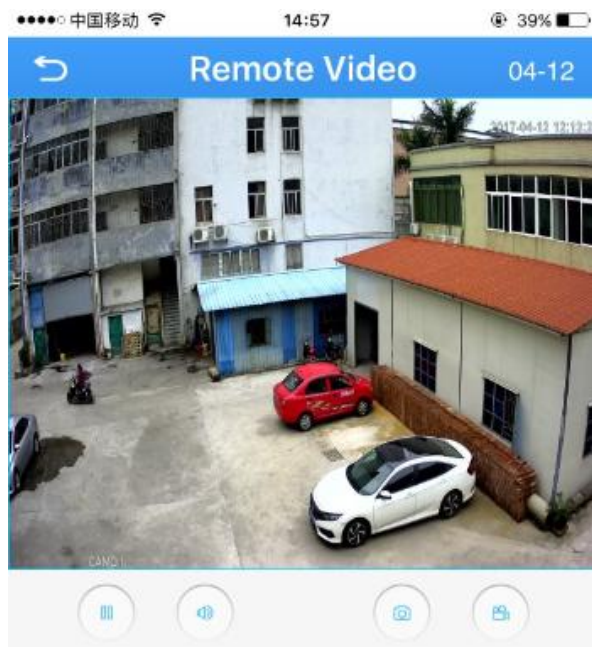


7. Name the device, key in the new password. Click OK to save.



Saving live stream to your smart phone

1. In Live Video page, press “camcorder” button to start recording



NOTE: Camcorder button will change to Blue when recording is activated.

2. Press camcorder button again to save the video

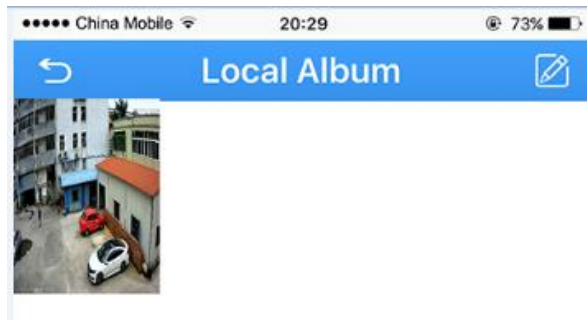
3. Click return icon  to enter Device list





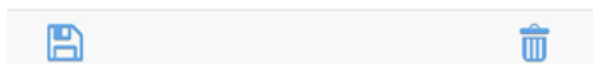
4. Press the list icon  to enter the main menu



5. Touch "local record" to locate the video on your smart phone. Press the snapshot will start play the video on your phone.



6. Press the edit icon  on top right corner, press snapshot to select the video.
7. Press the save icon  to save the video to your phone.

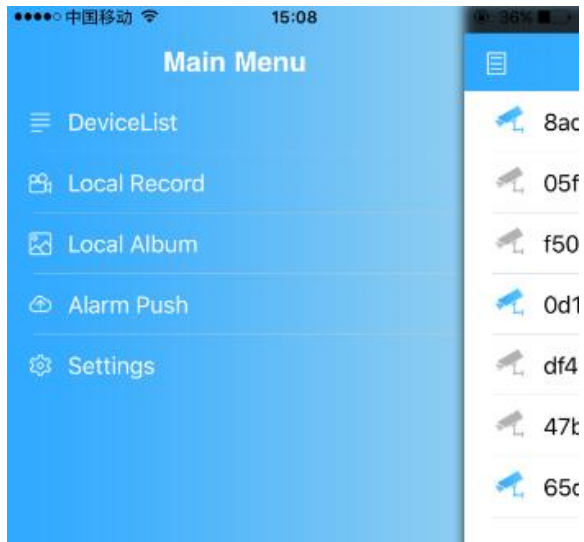




View snapshot at local files

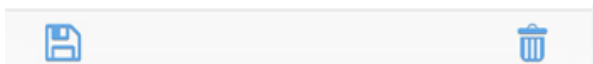
1. Click return icon  to enter Device list



2. Press the list icon to enter the main menu



3. Touch “Local Album” to view the snapshot.
4. Press the edit icon  on top right corner, select the snapshot to view the picture.
5. Press the save icon  to save the snapshot to your phone.

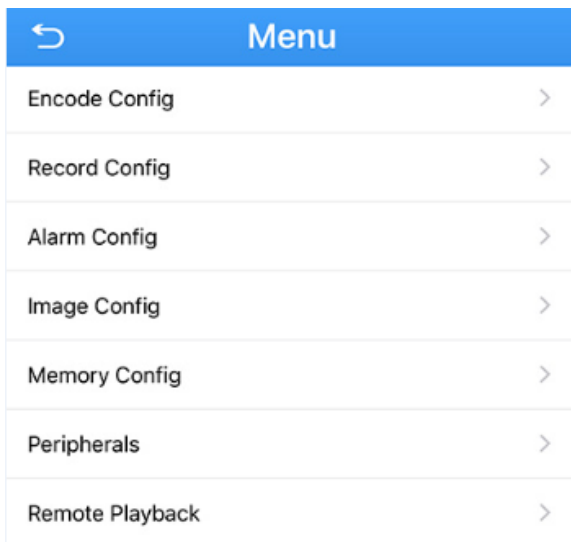


Playback footage on TF memory card (cameras with microSD only)

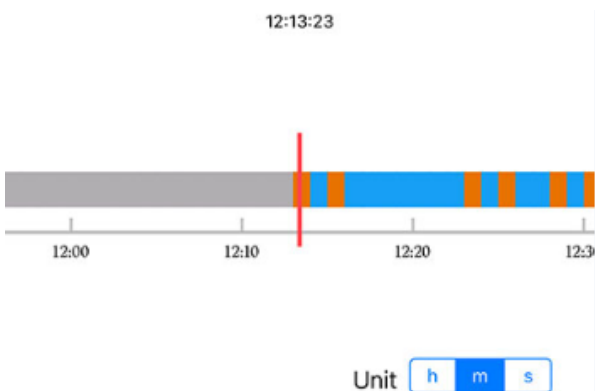
1. Touch home icon in the live view page.



2. Press "Remote playback" from the menu



3. The playback video will display. Press the button on right corner, you can select the time unit: h/m/s



NOTE: the footage block in Yellow is the video with motion detection. You need to enable the motion recording function in the camera to see the yellow block.

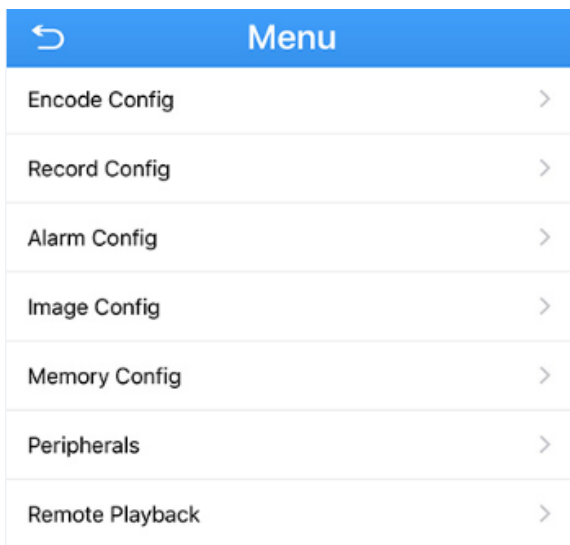
4. Press the speaker icon to activate the sound.



NOTE: Your camera must support audio and connects to audio pick up.

Optional: How to enable the motion recording from your smart phone.

1. Select “Alarm Config” from the menu, a new dialog pop up.

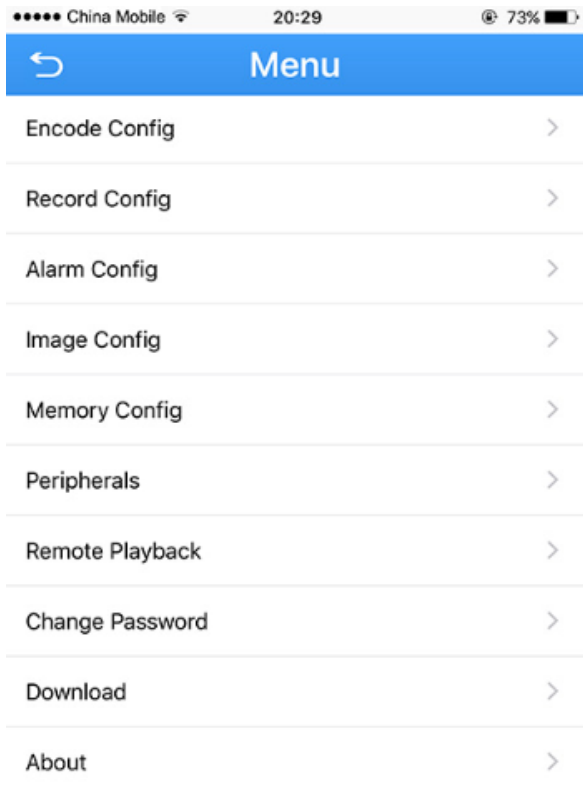


2. Press the “Motion detection”, slide the icon to right for “alarm”, “alarm record”, press “OK” to save.




Download footage from TF memory card (Cameras with microSD only)

1. In the live, press Home to enter “Menu”, press “Download”




2. Choose either download by file or by time



3. Click the “Download”  icon, the app start downloading by file

4. Click  icon twice to return to device list



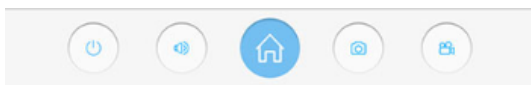
5. Press the  icon to enter the main menu



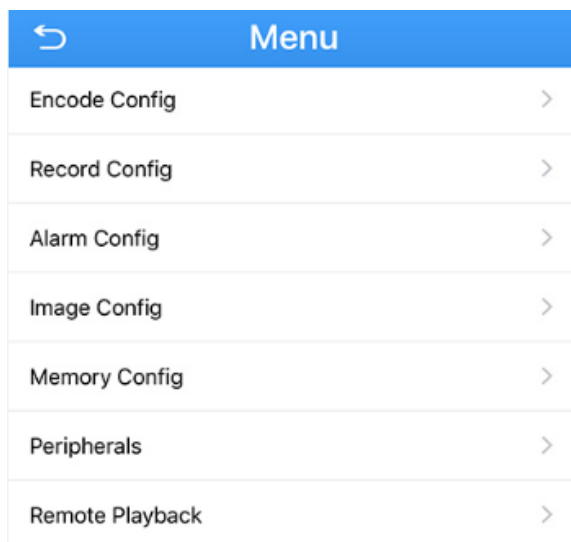
6. Touch “local record” to view the download video.

Enable Push Notification

1. In the live view page, Touch home icon.



2. Press “Alarm Config” from the menu, a new dialog pop up.




3. Press the “Motion detection”, enable “Send To Phone”, press “OK” to save.



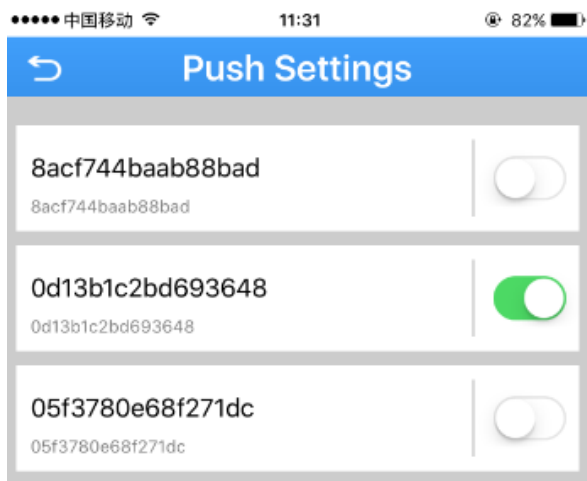
4. Click  icon twice to return to device list



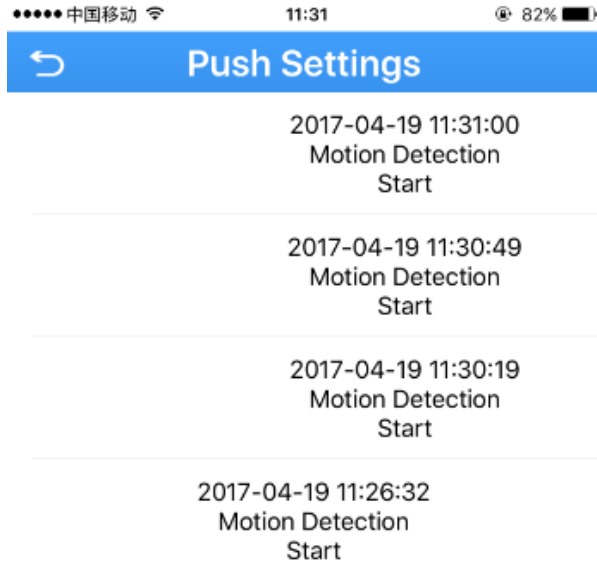
5. Press the  icon to enter the main menu



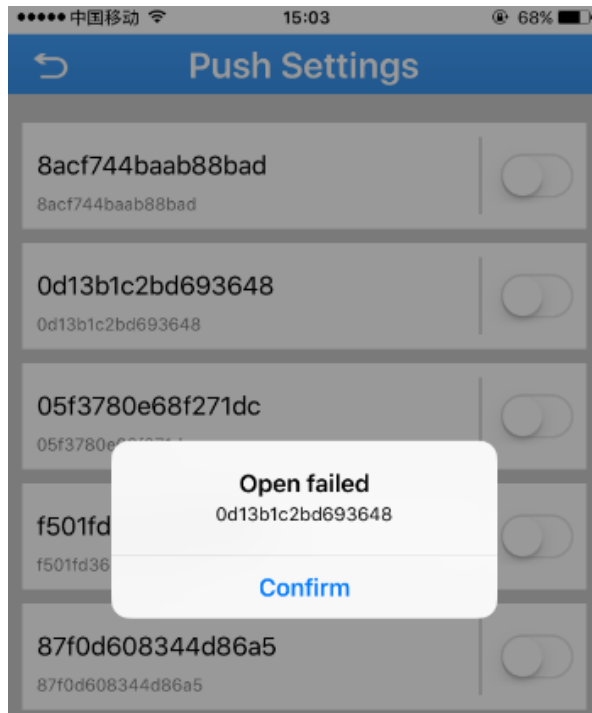
6. Press Alarm Push, Slide the icon to right turn on alarm push notification.



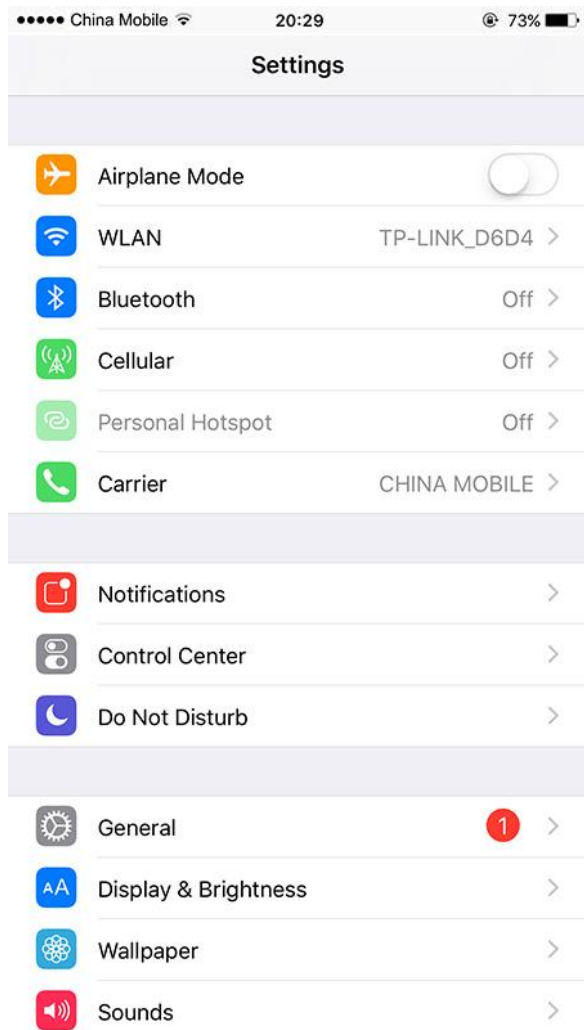
7. Click the camera name to see the motion detection detail of the camera.



8. In push setting, if the “open failed” pop up on screen, that mean we need to give this app authority to receive push message. It usually happens with iOS.



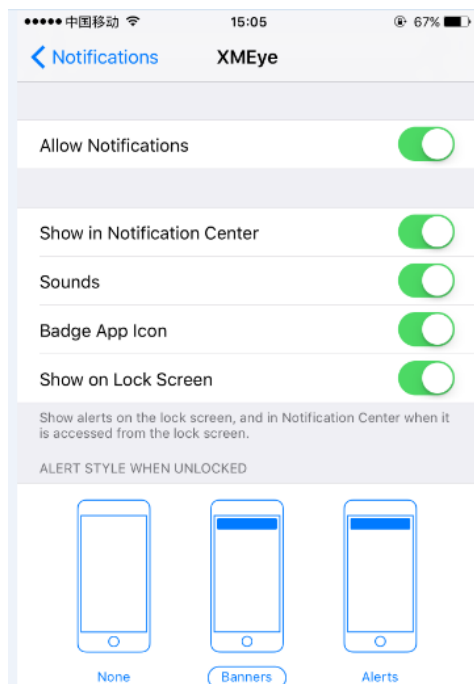
9. Go to settings of your iphone.



10. Touch “Notifications”, and find XMEYE



11. In the XMEYE page, slide the icon to right to enable the notification function from you smart phone.



Optional Receive the IP setting from your local network (DHCP)

If the IP camera don't have correct IP setting, especially DDNS, it will failed to receive the push message.

1. Touch home icon in the live view page.



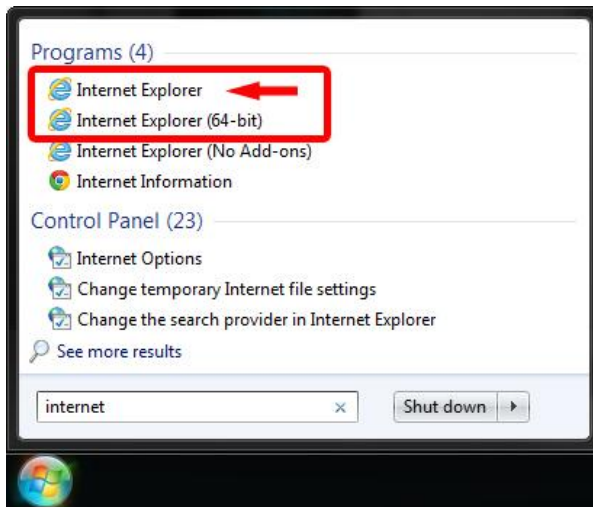
2. Touch "set Network" from the menu, enter a new screen.
3. slide the enable to right turn on DHCP. The camera will reboot and receive the IP setting from your local network.
4. Check the "set Network" again after 1-2 minutes, slide the enable to left if you want to fix the IP address.

Web Browser connection

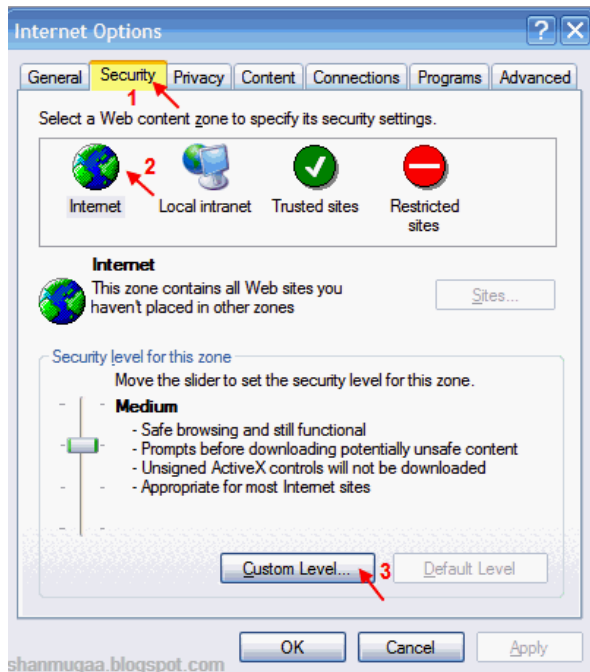
Checking your web browser security level

When using the web browser interface, you can install ActiveX controls to connect and view video using Internet Explorer. However, if you cannot download data, such as video and images due to the increased security measure. you should check the security level of your PC so that you are able to interact with the cameras over the web and, if necessary, modify the Active X settings.

IMPORTANT: The ActiveX plugin only support 32bit version, choose the Internet Explorer over Internet Explorer (64 bit) in windows-7



1. In Internet Explorer click Internet Options on the Tools menu.
2. On the Security tab, click the zone to which you want to assign a web site under “Select a web content zone to specify its security settings”.
3. Click Custom Level.



4. Change the ActiveX controls and plug-ins options that are signed or marked as safe to Enable. Change the ActiveX controls and plug-ins options that are unsigned to Prompt or Disable. Click OK.

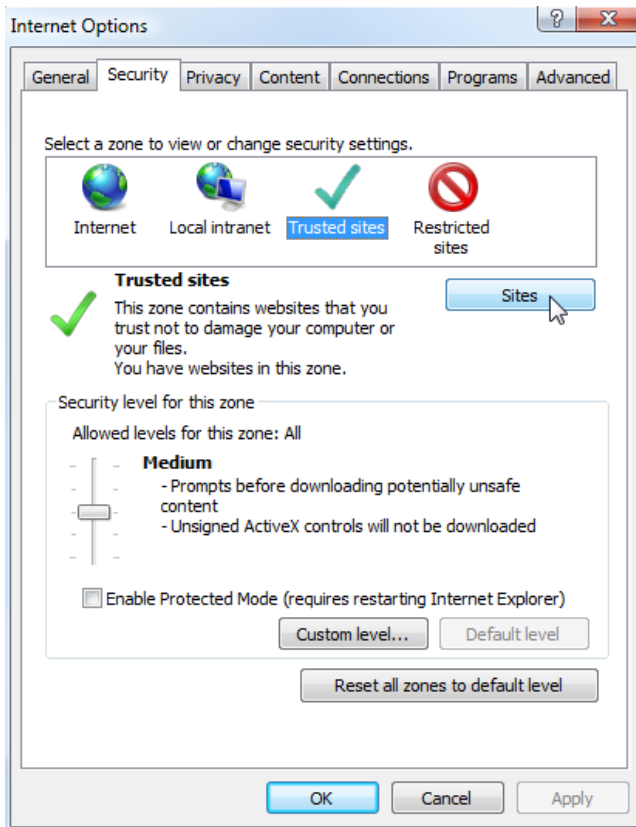


5. Click Apply in the Internet Options Security tab window.

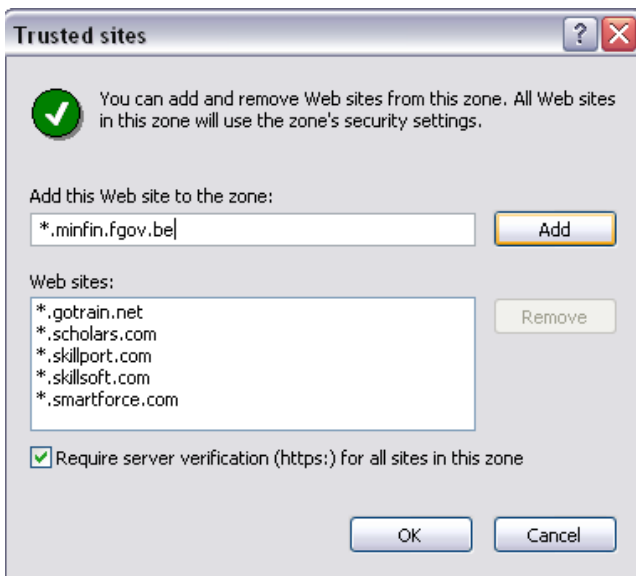
Windows 7 or above users

Internet Explorer for Windows 7 or above operating systems have increased security measures to protect your PC from any malicious software being installed. To have complete functionality of the web browser interface with Windows 7, do the following to add the camera's IP address to your browser's list of trusted sites

1. Run the Browser interface as an administrator in your workstation
2. Click Tools, and then Internet Options
3. Click the Security tab, and then select the Trusted sites icon.
4. Click the Sites button.



5. Clear the “Require server verification (https:) for all sites in this zone box
6. Enter the IP address in the “Add this website to the zone” field.



7. Click Add, and then click Close
8. Click OK in the Internet Options dialog window.

Access the camera over internet

1. In the web browser enter the camera's IP address (default is 192.168.1.10), The Login dialog box appears.

NOTE: Ensure that the Active X controls are enabled.

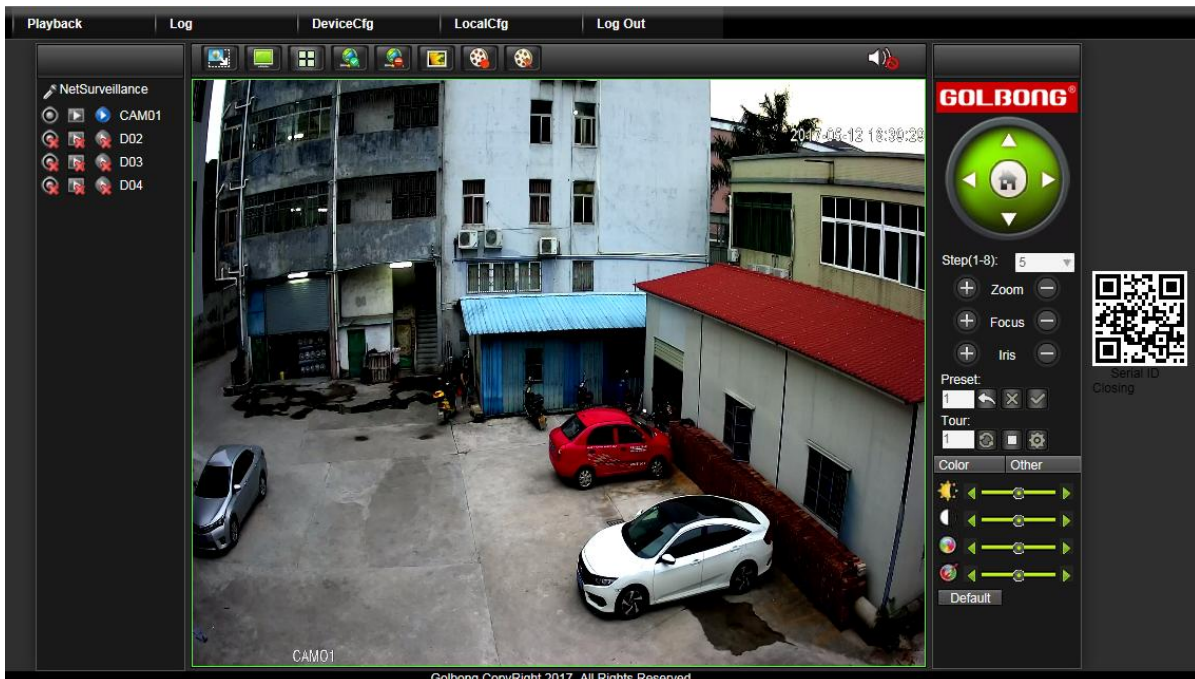
2. Enter your user name and password.

Username: admin

Password: (no require)



3. Click Login. The web browser window appears in live view mode.



Note:

- To view setup videos for many of the steps outlined in this guide, go to <https://www.youtube.com/golbongtoday>
- This user manual is for reference only. Slight differences may be found in the user interface.
- All the designs and software here are subject to change without prior written notice.
- All trademarks and registered trademarks mentioned are the properties of their respective owners.

To contact GOLBONG support, please do one of the following:

- a. Visit <http://www.golbong.com/contact-us.asp> and use the email form
- b. or Email GOLBONG Customer Support: support@golbong.com

Copyright GOLBONG® 2017

GOLBONG®