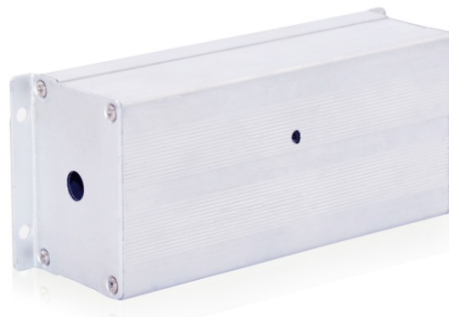


2646-83

AHD Door Frame Camera



Key Vaule Highlight

- Eye-level Setup

The user can install 2646-83 camera on the door frame to capture the face detail.

- HD Image Detail

The 2646-83 door frame camera can provide image detailed in 2MP HD resolution with its 1/2.8 inch CMOS sensor.

- Re-use the coaxial cable.

The user can re-use existed coaxial cable to upgrade the analog system to HD CCTV with 2646-83 door frame camera.

- Covert Design

The discreet design make the camera easy to blend into business environment. The customer will more feel comfortable without seeing the camera shooting on them.

Typical Application

Retail

Convenience Store

Workshop

Logistics center

and others

Specification

Power	
Input voltage	+12 VDC
Power consumption	4.5 W (max)
Video	
Sensor type	1/2.8 Type SONY Exmor CMOS Sensor
Sensor pixels	1920x1080
Sensitivity	1.0 lx (IR off)
Resolution	1920x1080
Video Output	1 composite video 1 Vpp 75 ohm automatic termination
Day & Night	photocells control
Shutter	Auto (1/50(1/60)s to 1/10,000s)
AGC	Auto
Night vision	
Infrared	N/A
Lens	
Lens type	3.7mm
Field of View	H: 82°
Lens mount	Board mounted
Day & Night	Auto IR Cut filter
Mechanical	
Dimensions	140*52*38mm
Weight	TBA
Environmental	
Operating temperature Camera	-20 °C to +55 °C (-4 °F to +131 °F)
Storage temperature	-20 °C to +70 °C (-4 °F to +158 °F)
Humidity	10% to 80% relative humidity (non condensing)
Ordering Information	
AHD Door Frame Camera	2646-83

Guangzhou

No.3 East Alley, Guangfeng East Road,
Zengchen District, Guangzhou., 511300,
P.R.China
Tel: +86-20-8244-2660
Fax: +86-20-8274-5925
Email: sales@golbong.com

Shenzhen

1/F Block 295, Jiuwei, Xixiang Town,
Baoan District, Shenzhen, 518000,
P.R.China
Tel: +86-755-81465995
Fax: +86-755-81469770
Email: sales@golbong.com